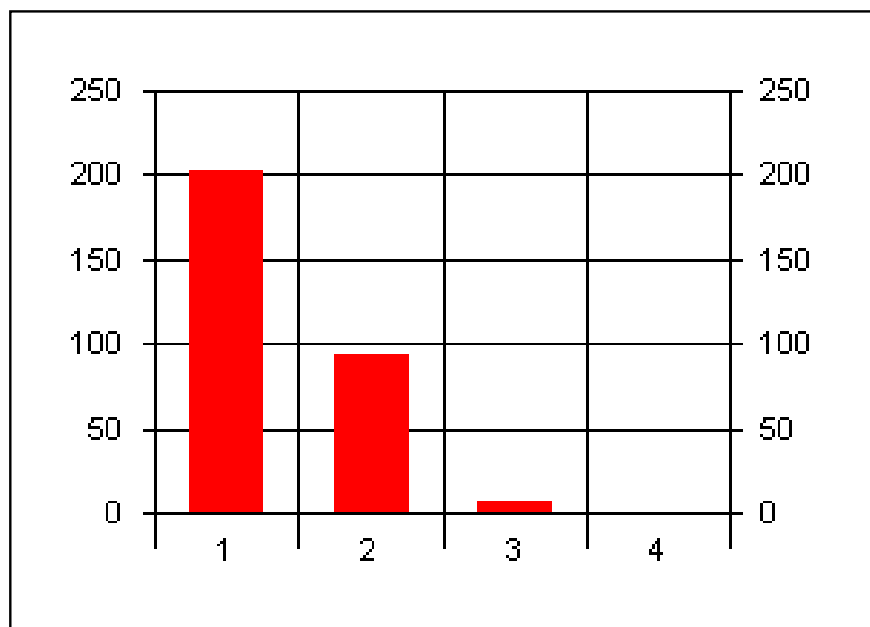
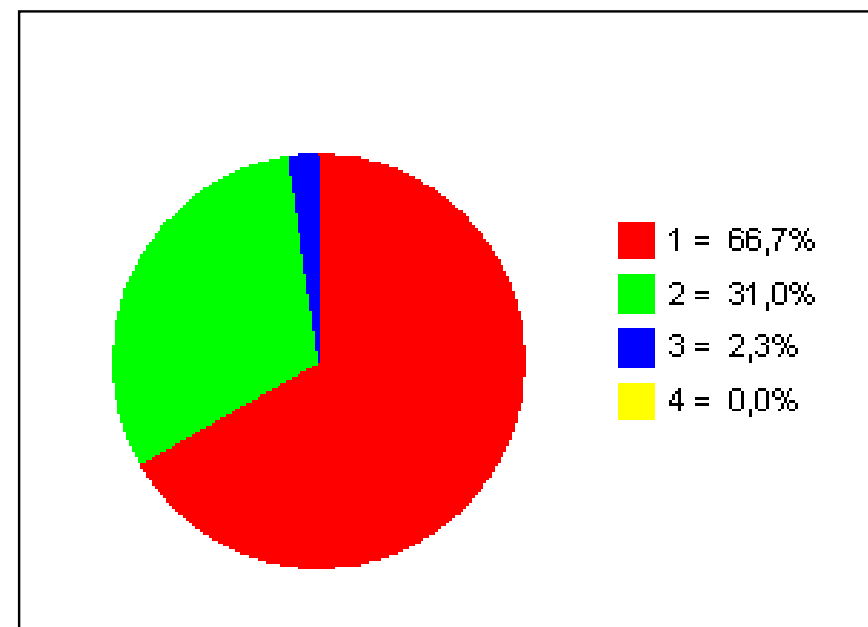


Foreldrakönnun Grunnskóla Seltjarnarness

1. Skólinn hvetur barnið mitt til að skila góðum námsárangri

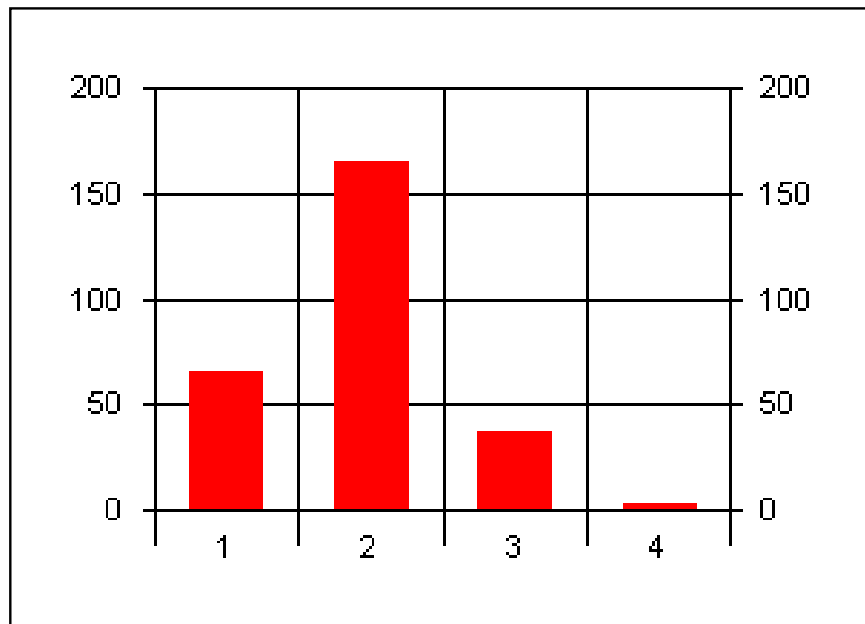


1 = sammála
2 = frekar sammála
3 = frekar ósammála
4 = ekki sammála

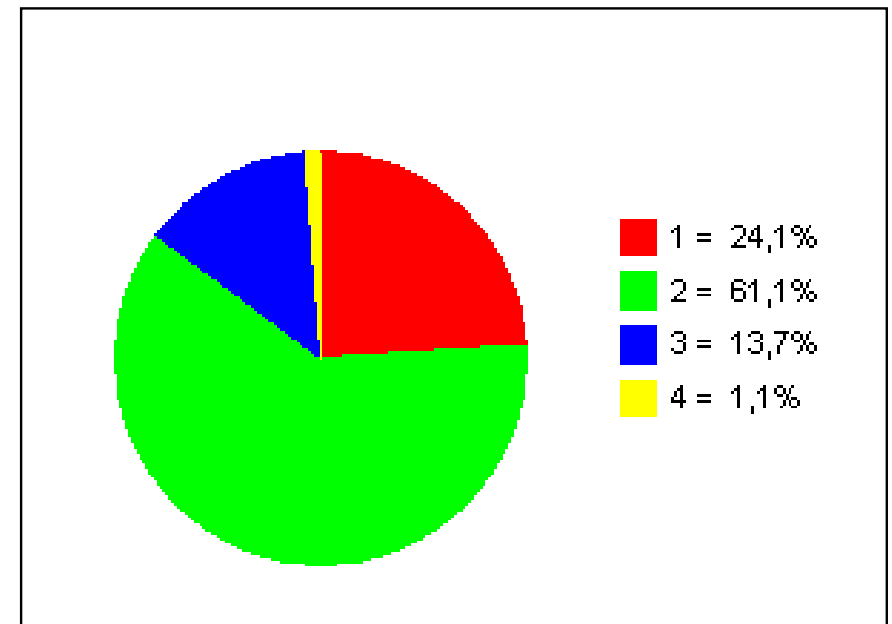


Foreldrakönnun Grunnskóla Seltjarnarness

2. Hvað með einelti í skólanum?

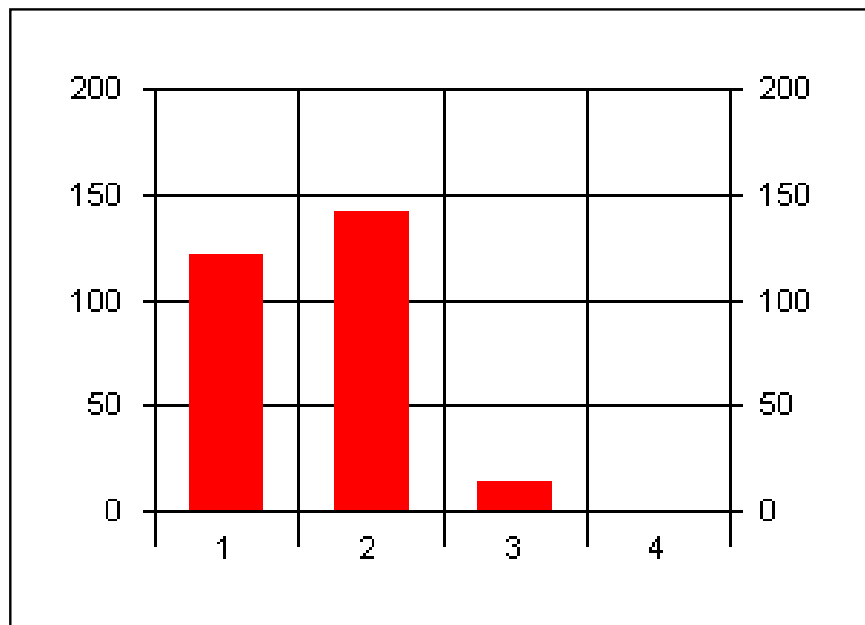


1 = þekkest varla
2 = lítið
3 = talsvert
4 = umtalsvert vandamál

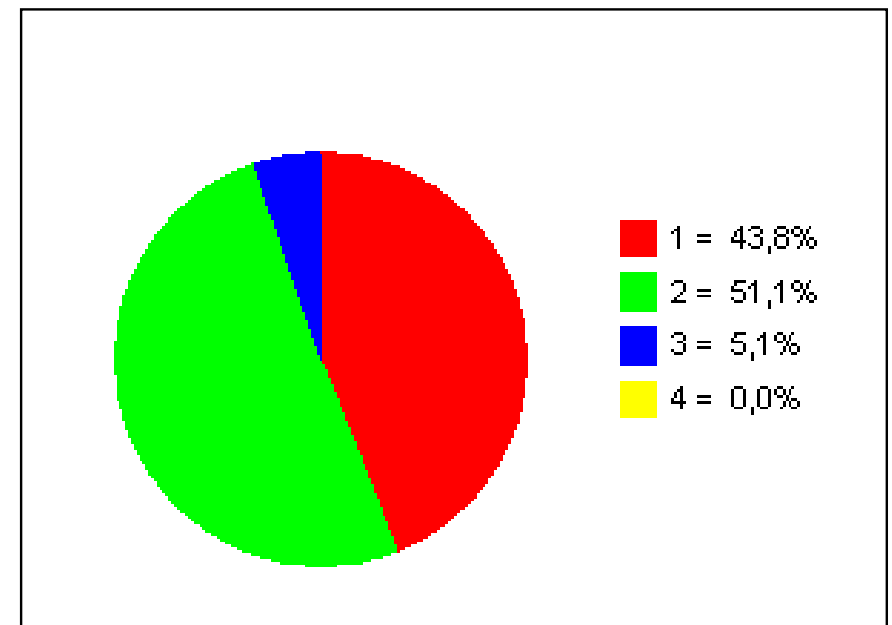


Foreldrakönnun Grunnskóla Seltjarnarness

3. Það eru góð samskipti hjá nemendum í skólanum

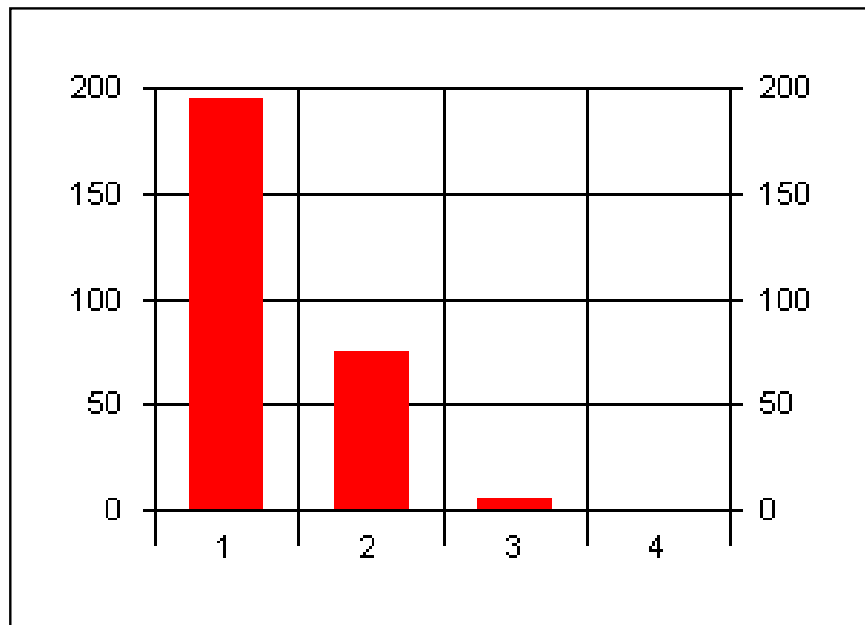


1 = sammála
2 = frekar sammála
3 = frekar ósammála
4 = ekki sammála

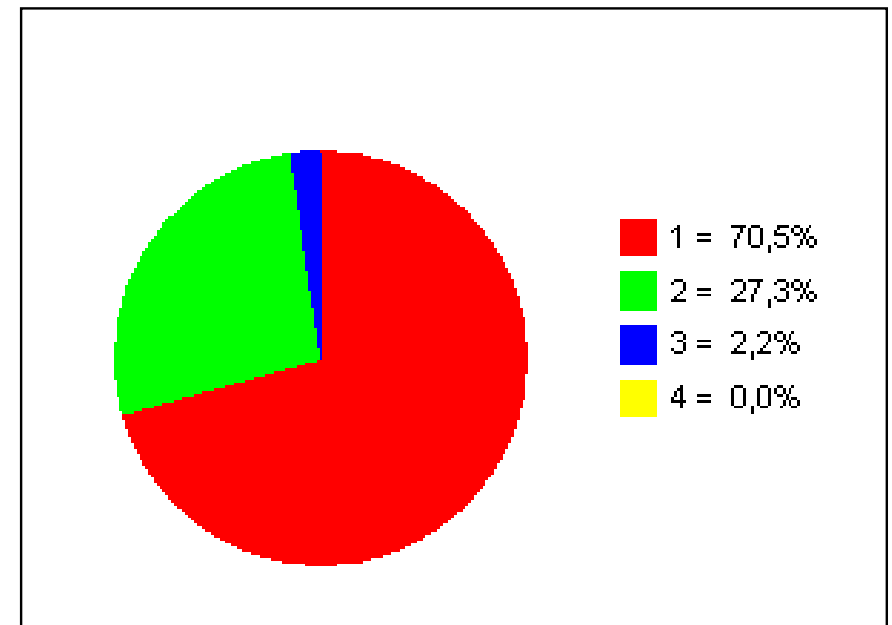


Foreldrakönnun Grunnskóla Seltjarnarness

4. Barninu mínu líður vel í skólanum

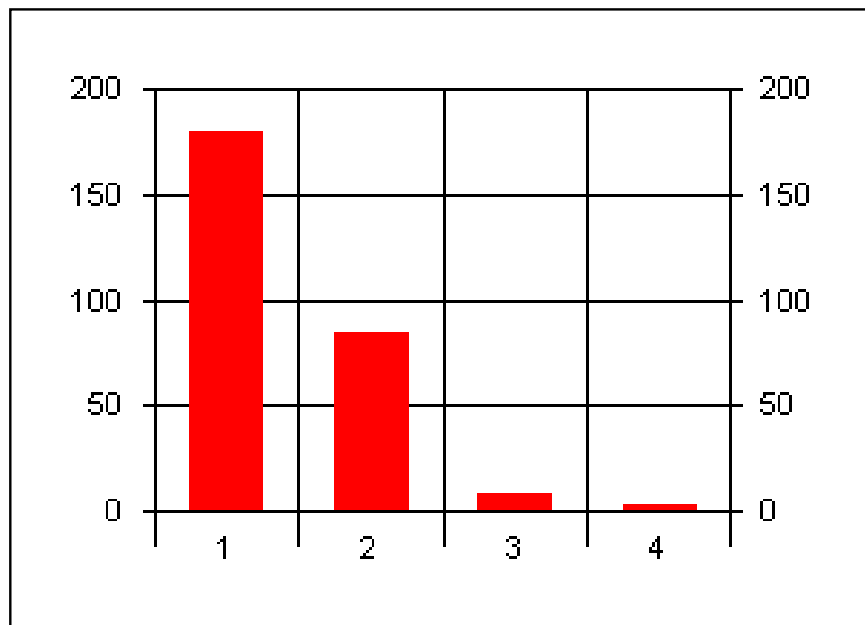


1 = sammála
2 = frekar sammála
3 = frekar ósammála
4 = ekki sammála

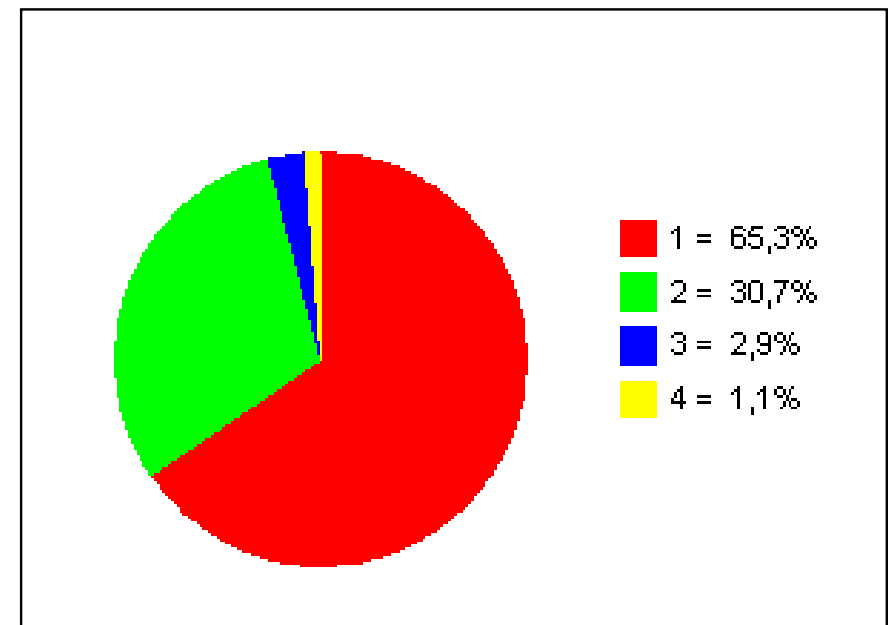


Foreldrakönnun Grunnskóla Seltjarnarness

5. Umsjónarkennari barnsins míns hefur góða yfirsýn yfir þarfir barnanna

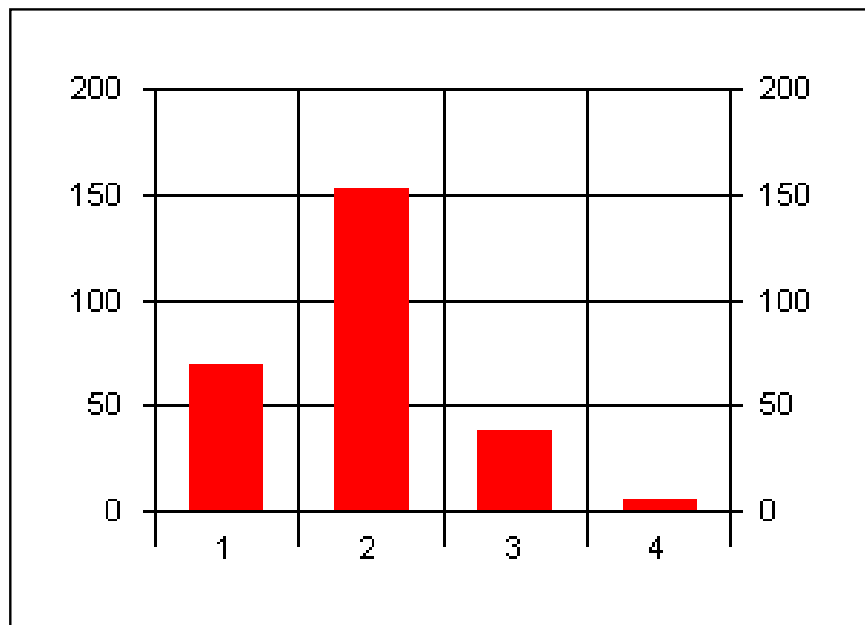


1 = sammála
2 = frekar sammála
3 = frekar ósammála
4 = ekki sammála

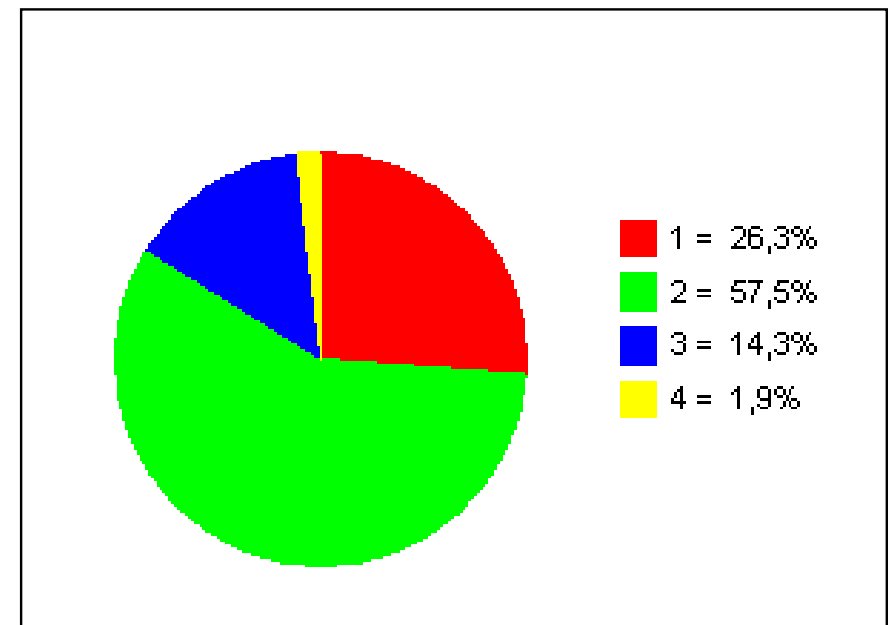


Foreldrakönnun Grunnskóla Seltjarnarness

6. Skólinn tekur af festu á einelti og agavandamálum

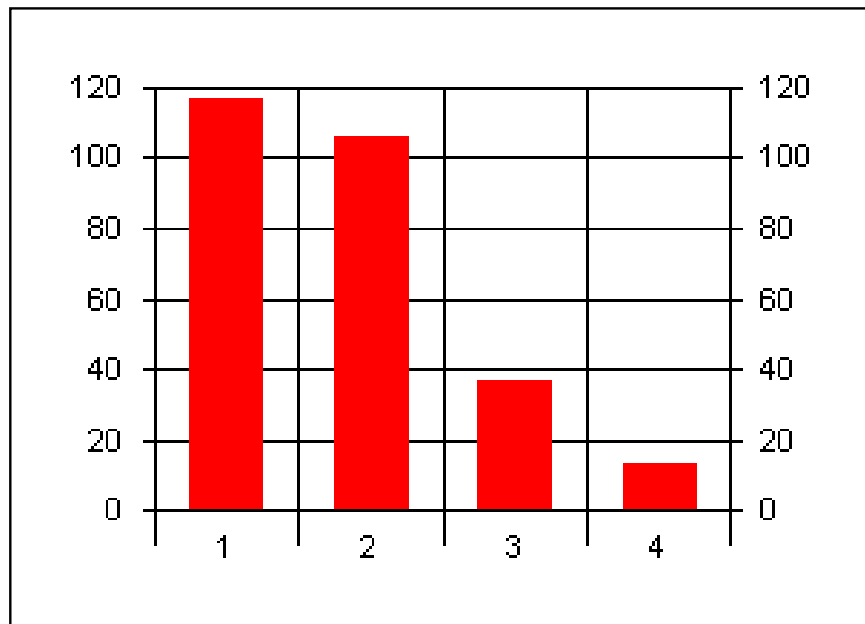


1 = sammála
2 = frekar sammála
3 = frekar ósammála
4 = ekki sammála

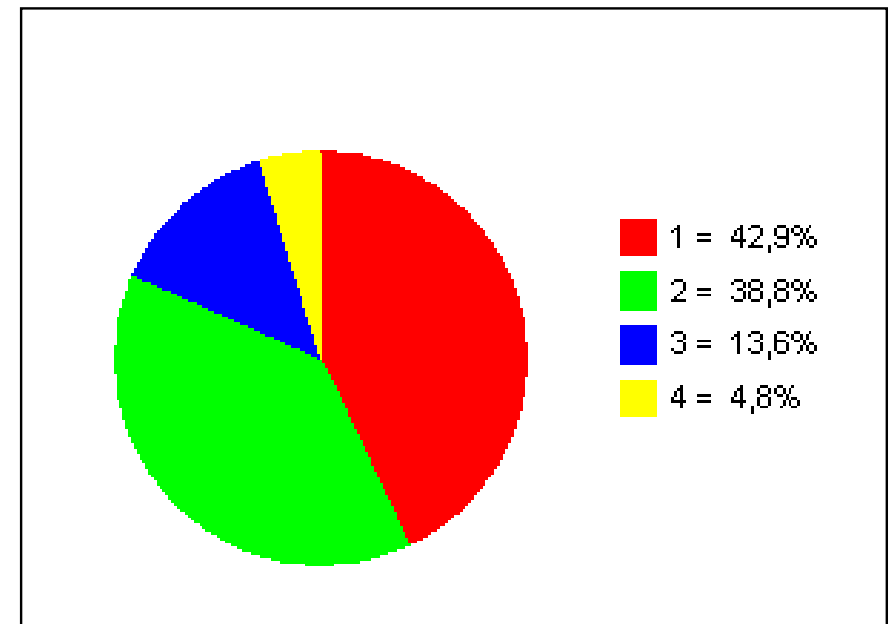


Foreldrakönnun Grunnskóla Seltjarnarness

7. Vinnufriður í bekk barnsins er góður

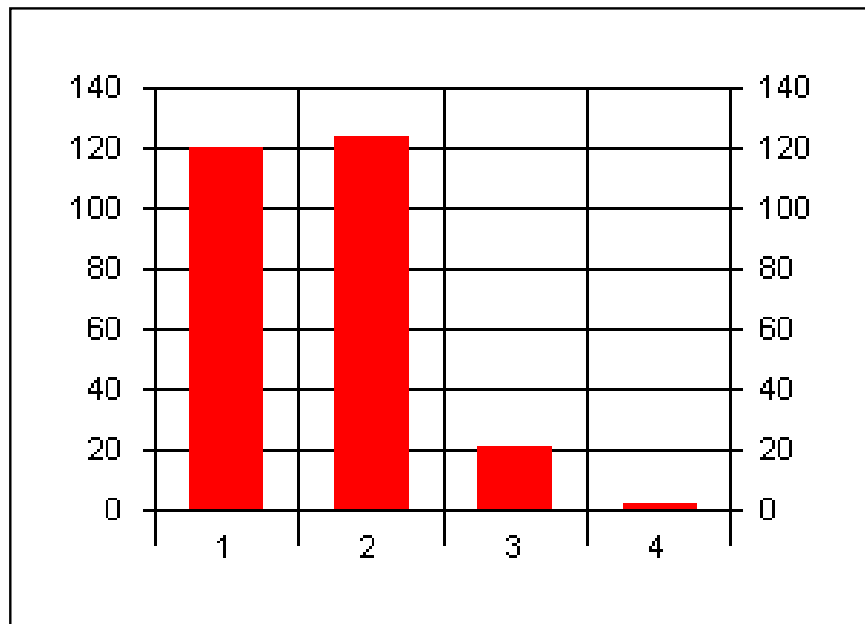


1 = sammála
2 = frekar sammála
3 = frekar ósammála
4 = ekki sammála

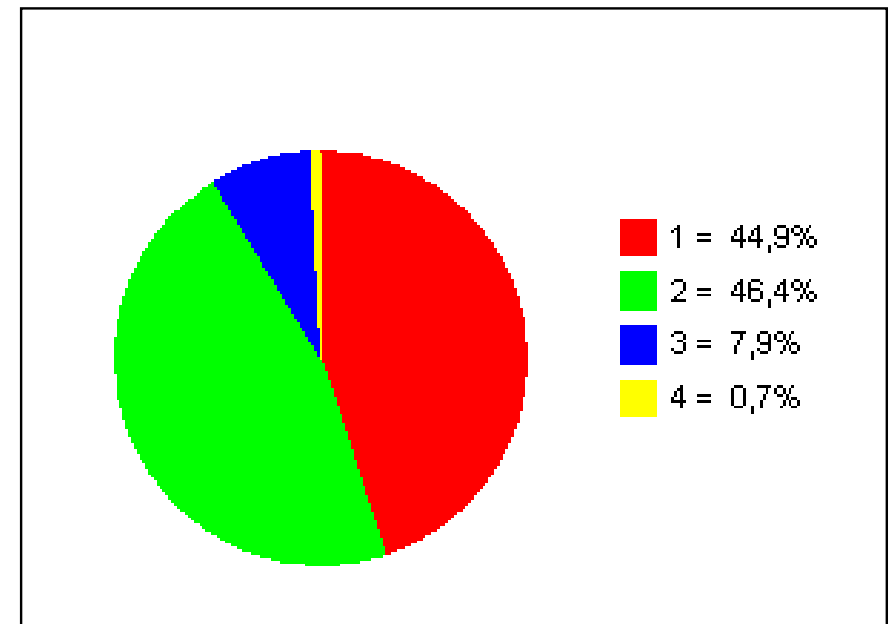


Foreldrakönnun Grunnskóla Seltjarnarness

8. Það fá allir hjálp ef þeir lenda í vandræðum

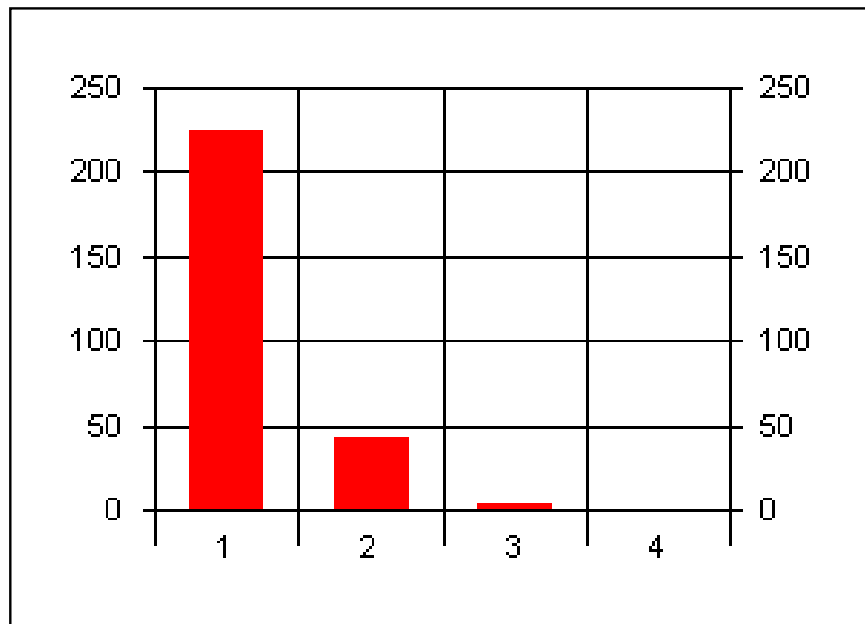


1 = sammála
2 = frekar sammála
3 = frekar ósammála
4 = ekki sammála



Foreldrakönnun Grunnskóla Seltjarnarness

9. Mér finnst ég (okkur finnst við) vera velkomin(n) í skólann

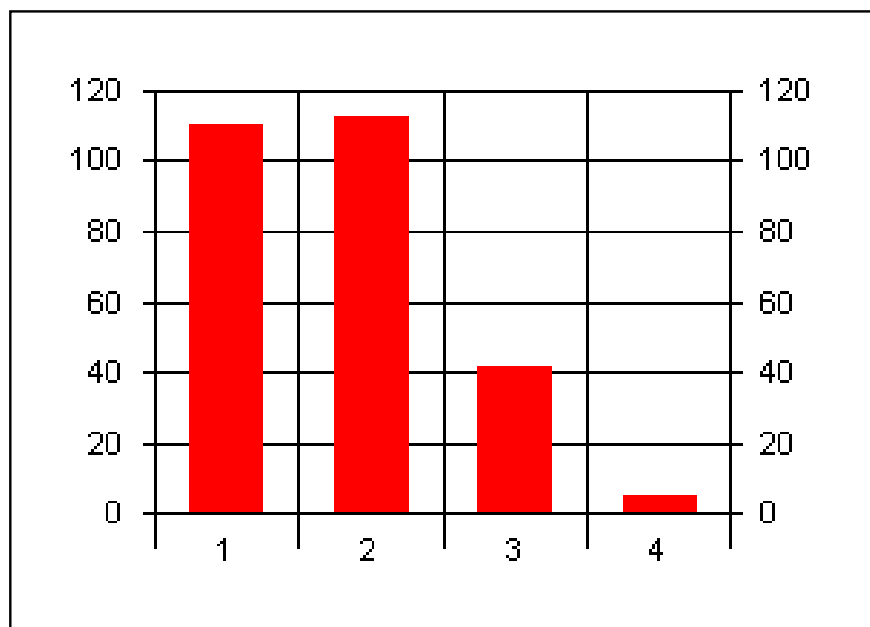


1 = sammála
2 = frekar sammála
3 = frekar ósammála
4 = ekki sammála

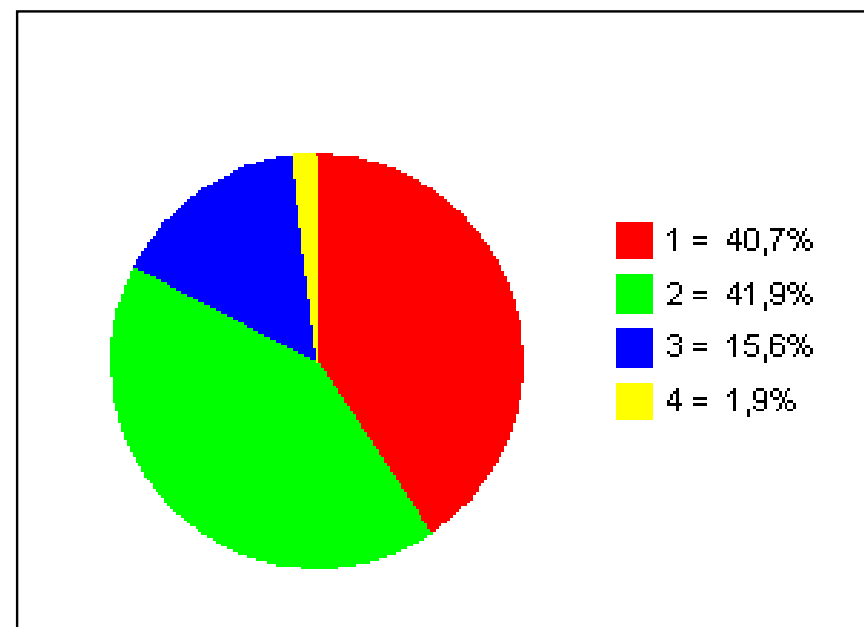


Foreldrakönnun Grunnskóla Seltjarnarness

10. Skólinn hefur kynnt stefnu sína og markmið með skýrum hætti

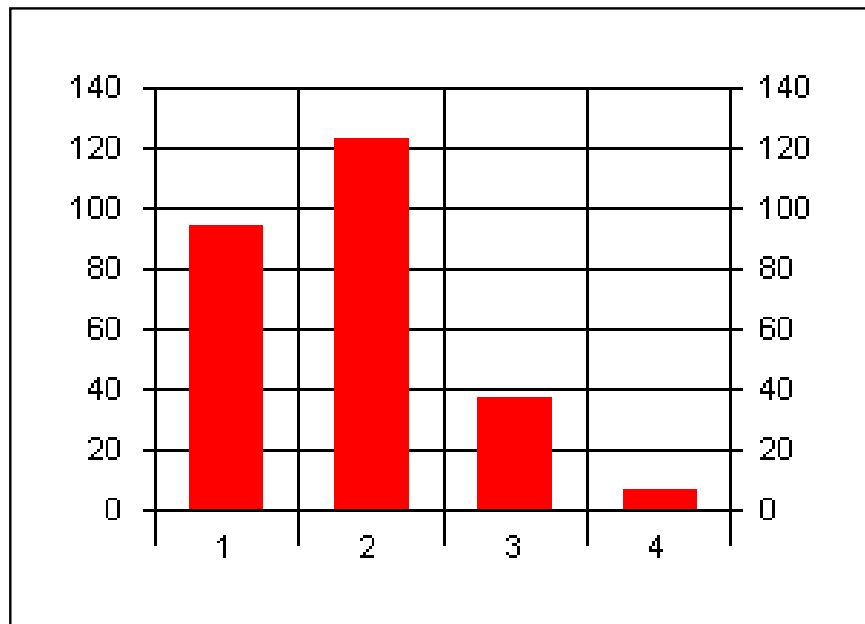


1 = sammála
2 = frekar sammála
3 = frekar ósammála
4 = ekki sammála

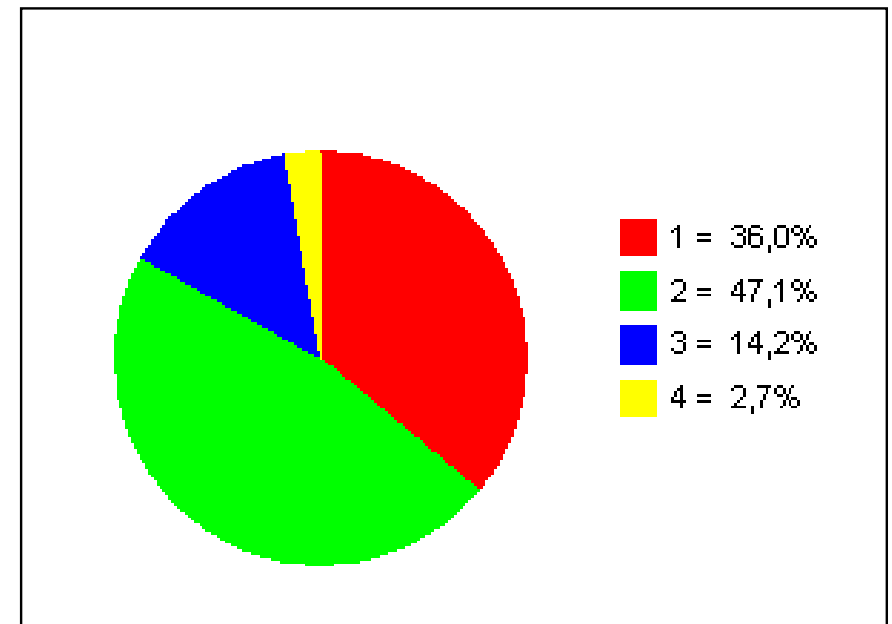


Foreldrakönnun Grunnskóla Seltjarnarness

11. Skólastjóri er áhugasamur um að bæta skólastarfið

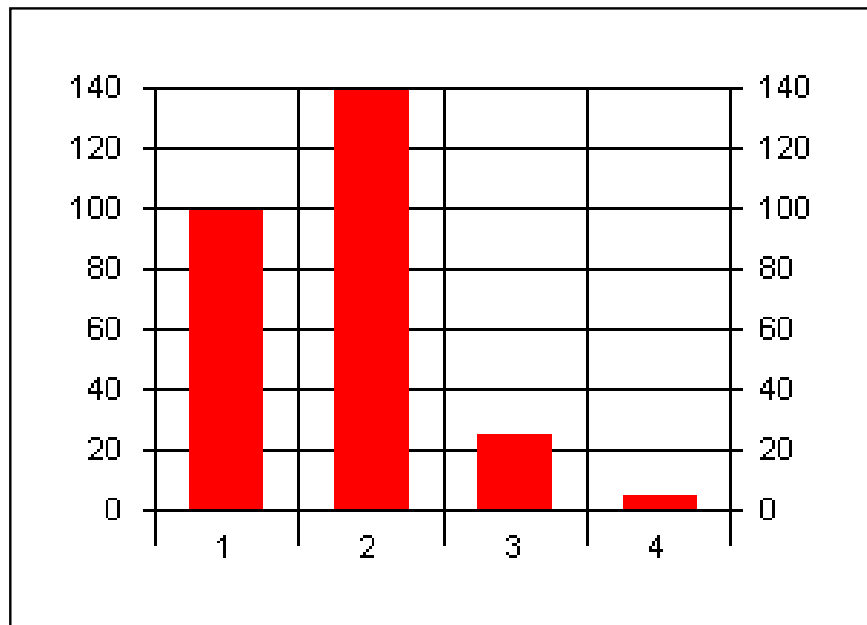


1 = sammála
2 = frekar sammála
3 = frekar ósammála
4 = ekki sammála

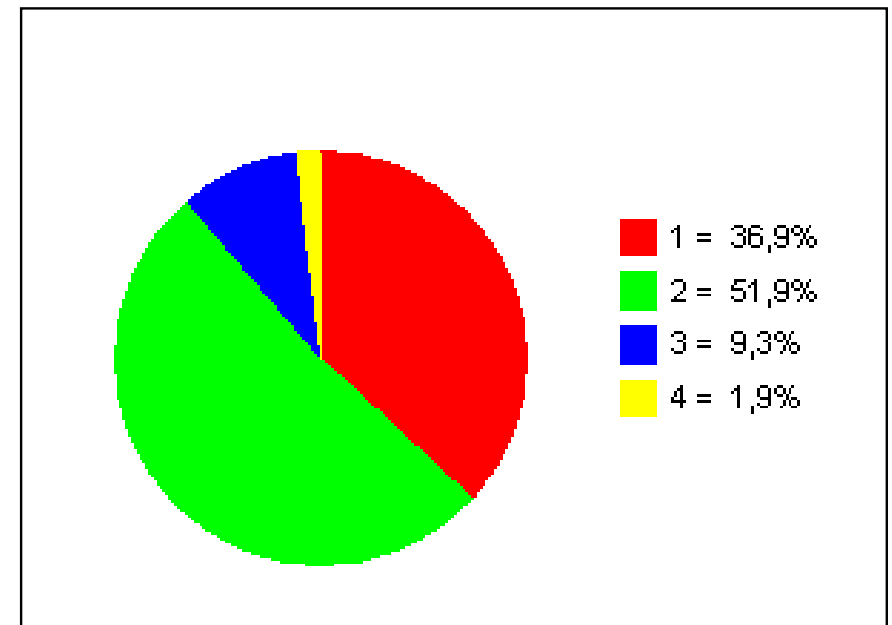


Foreldrakönnun Grunnskóla Seltjarnarness

12. Skólinn tekur tillit til óska og athugasemda foreldra

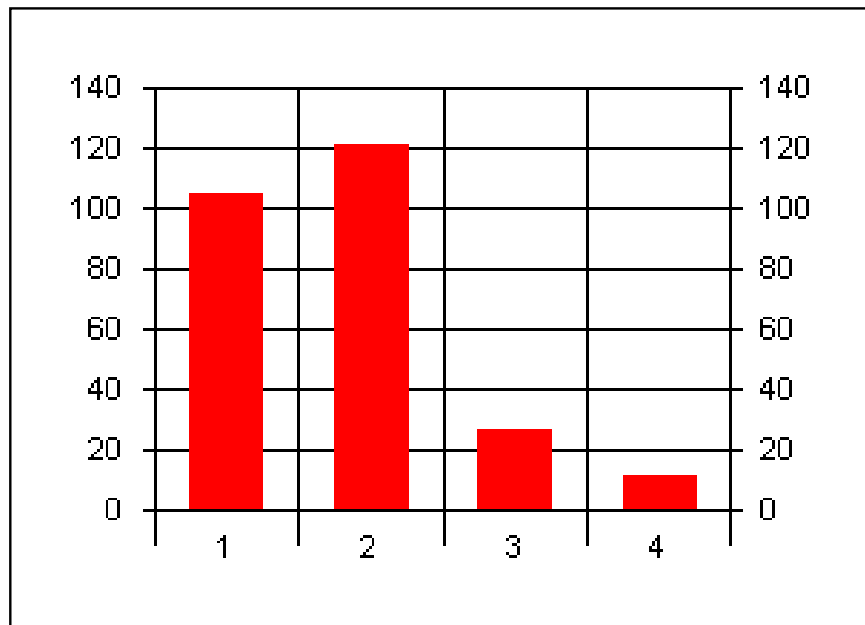


1 = sammála
2 = frekar sammála
3 = frekar ósammála
4 = ekki sammála

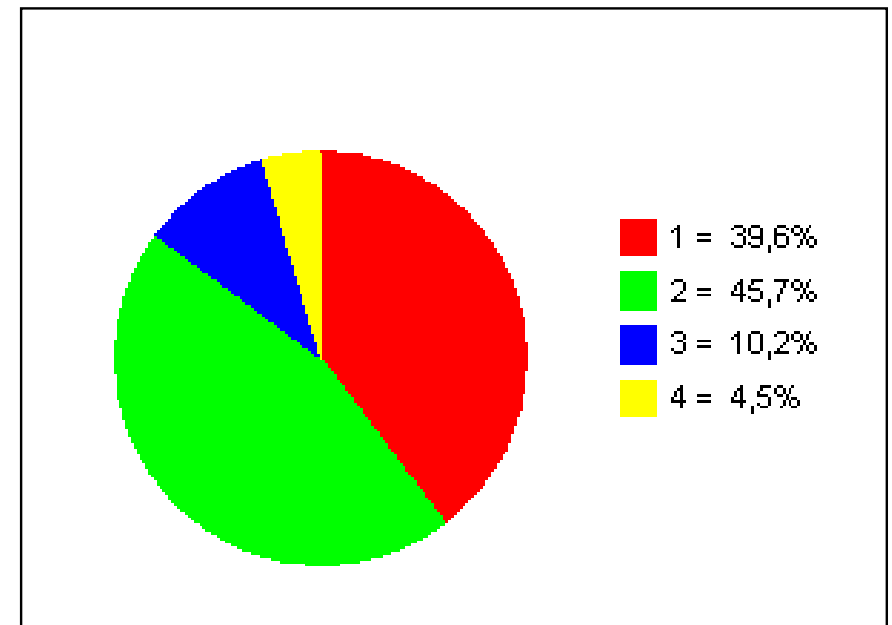


Foreldrakönnun Grunnskóla Seltjarnarness

13. Ég er ánægð(ur) (við erum ánægð) með stjórnun skólans

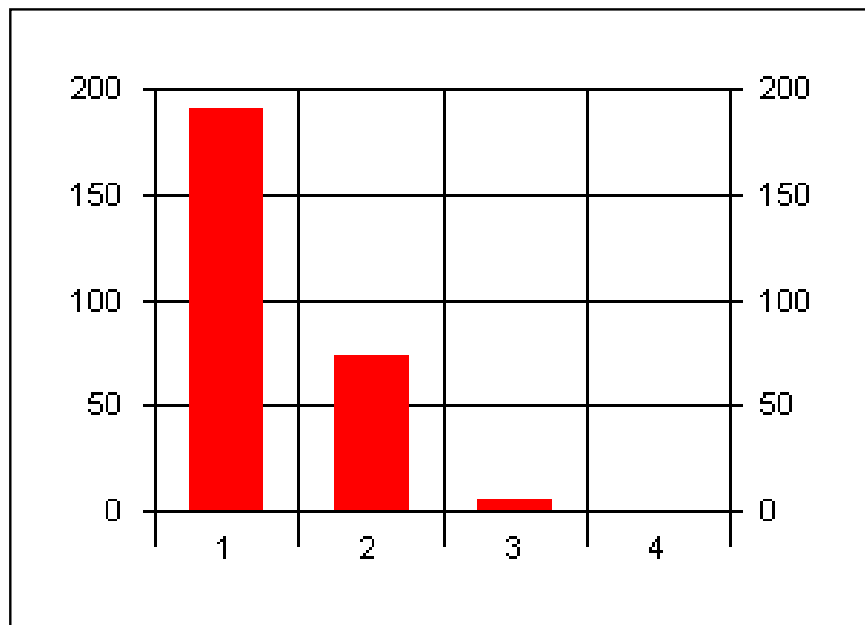


1 = sammála
2 = frekar sammála
3 = frekar ósammála
4 = ekki sammála

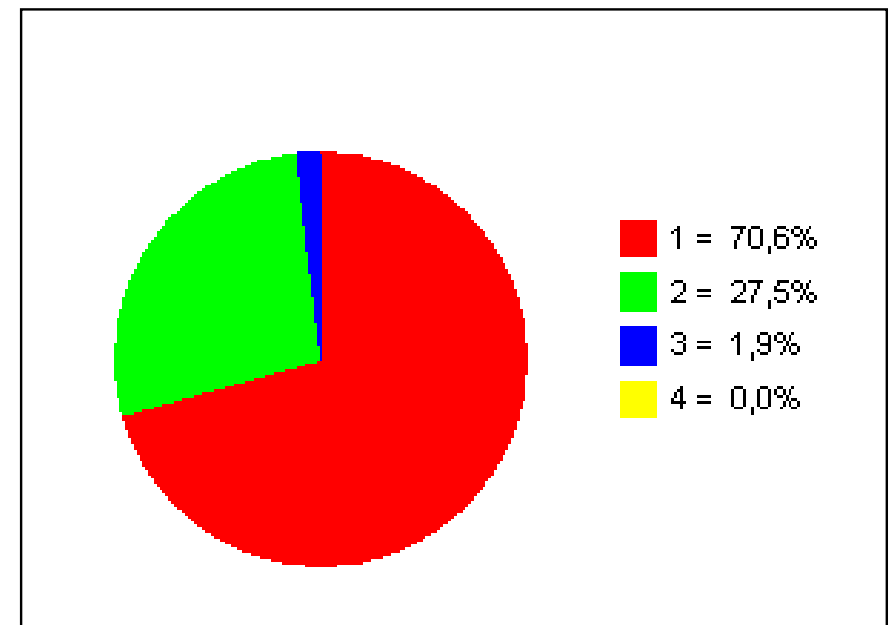


Foreldrakönnun Grunnskóla Seltjarnarness

14. Kennarar barnsins leggja metnað sinn í að kennslan sé góð

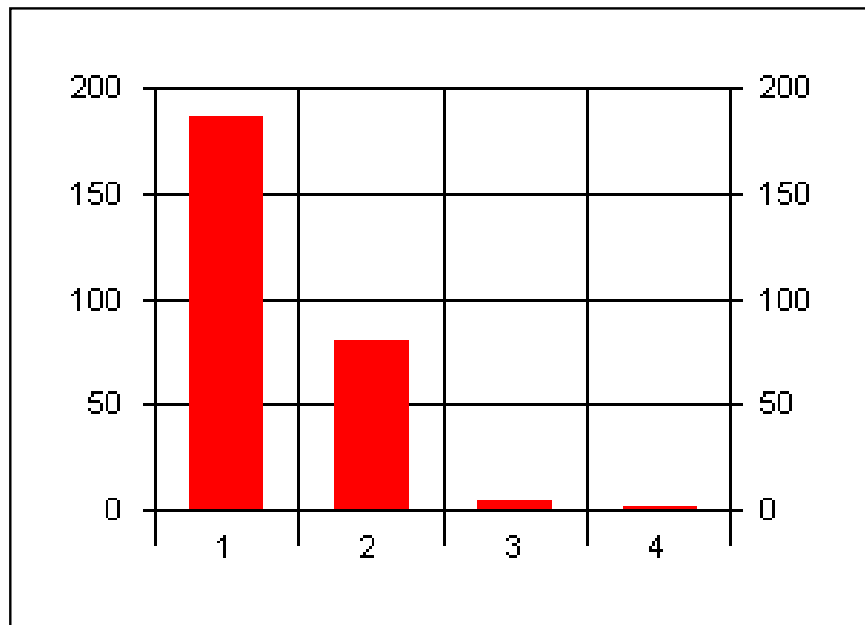


1 = sammála
2 = frekar sammála
3 = frekar ósammála
4 = ekki sammála

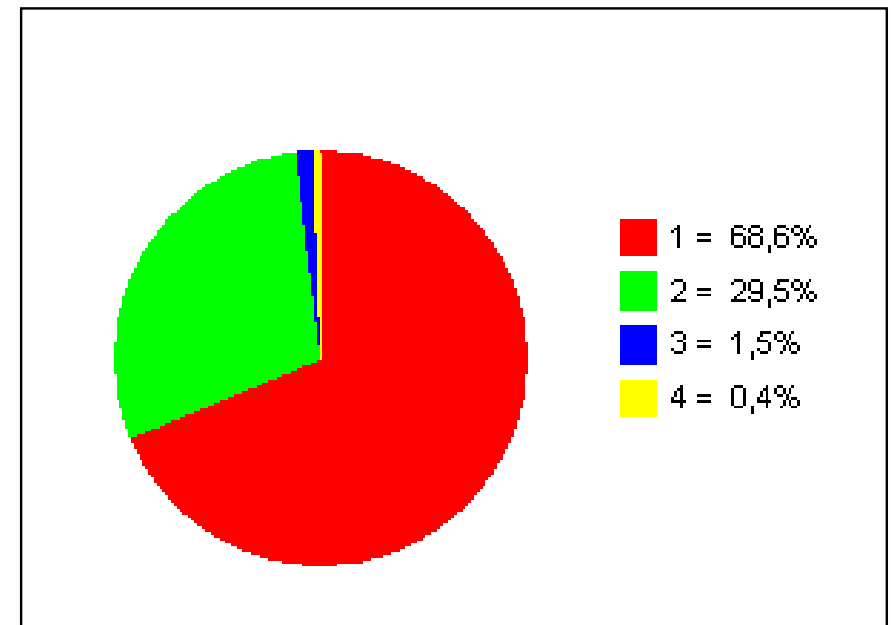


Foreldrakönnun Grunnskóla Seltjarnarness

15. Við treystum starfsmönnum skólans

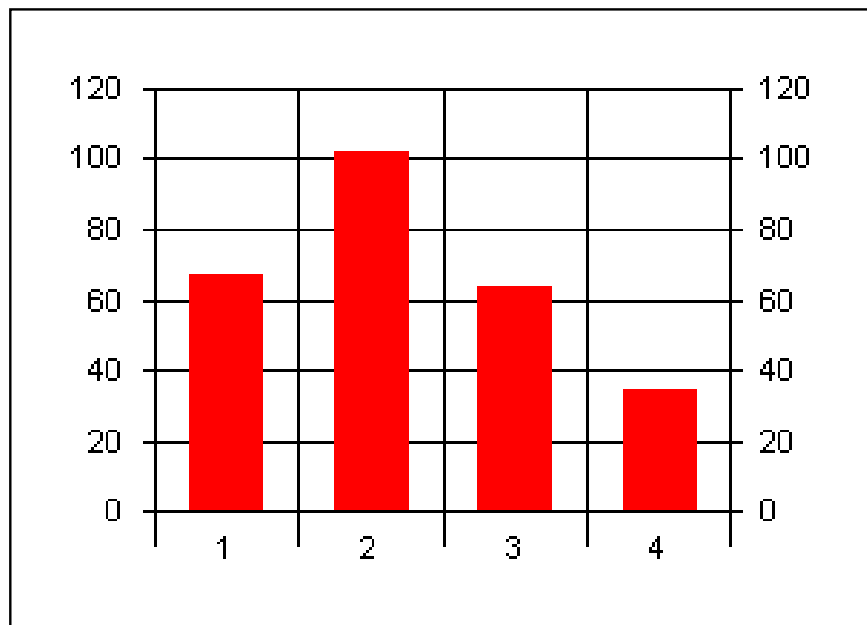


1 = sammála
2 = frekar sammála
3 = frekar ósammála
4 = ekki sammála

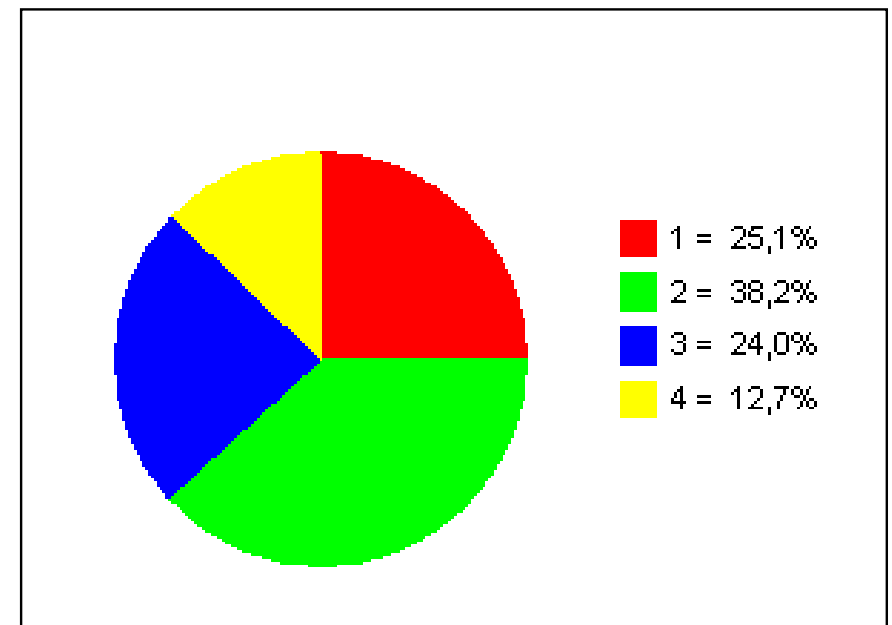


Foreldrakönnun Grunnskóla Seltjarnarness

16. Nemendum stendur til boða fjölbreytt tómsundastarf á vegum skólans

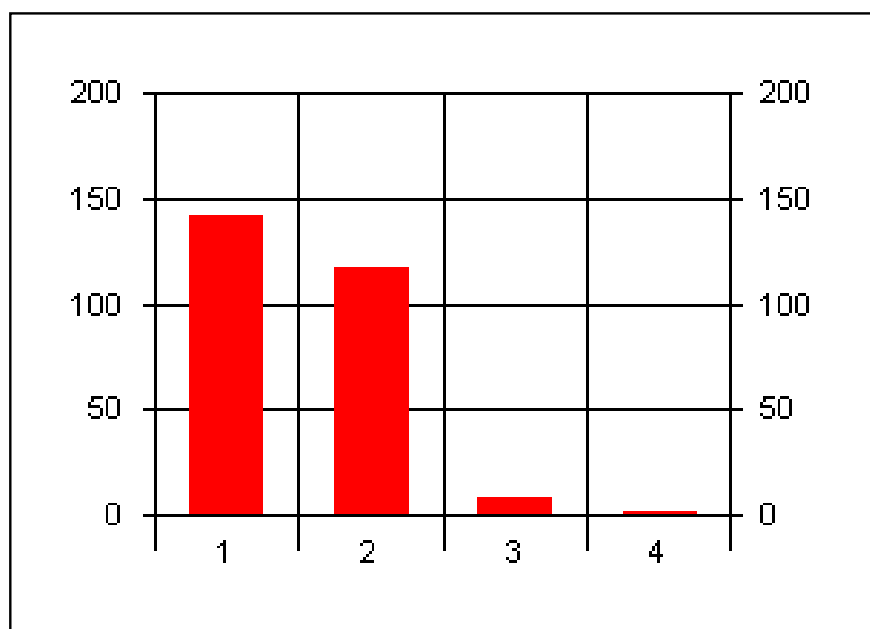


1 = sammála
2 = frekar sammála
3 = frekar ósammála
4 = ekki sammála

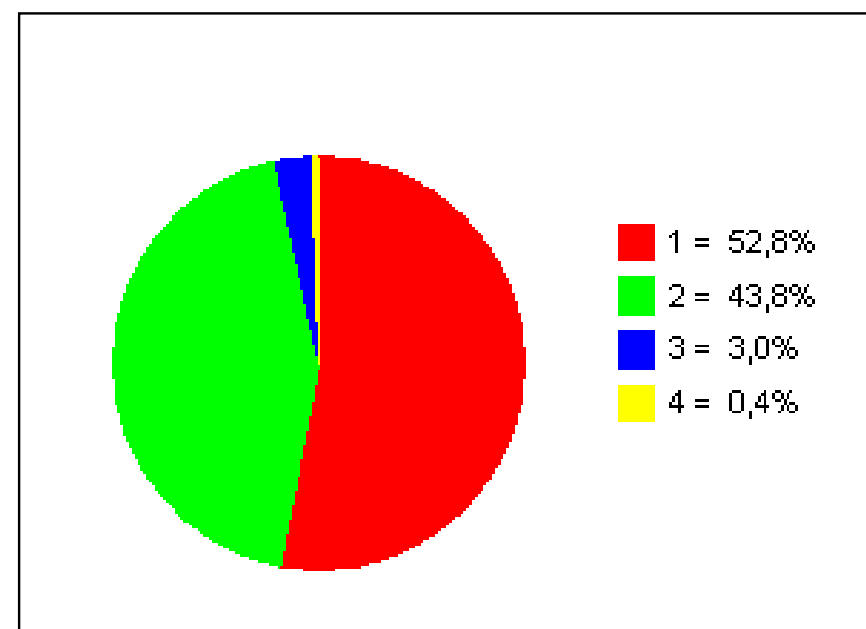


Foreldrakönnun Grunnskóla Seltjarnarness

17. Börnum okkar eru sköpuð góð skilyrði til að ná árangri í námi og starfi

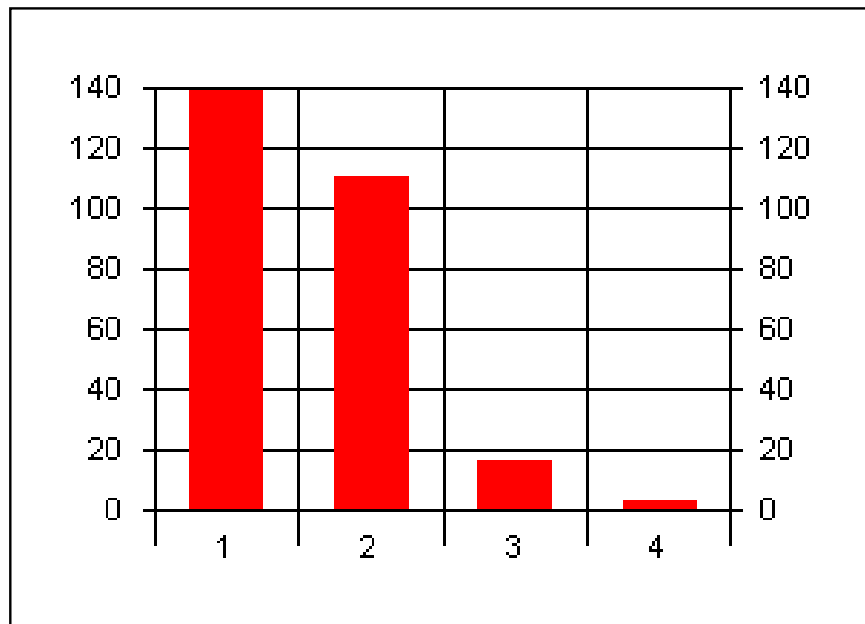


1 = sammála
2 = frekar sammála
3 = frekar ósammála
4 = ekki sammála

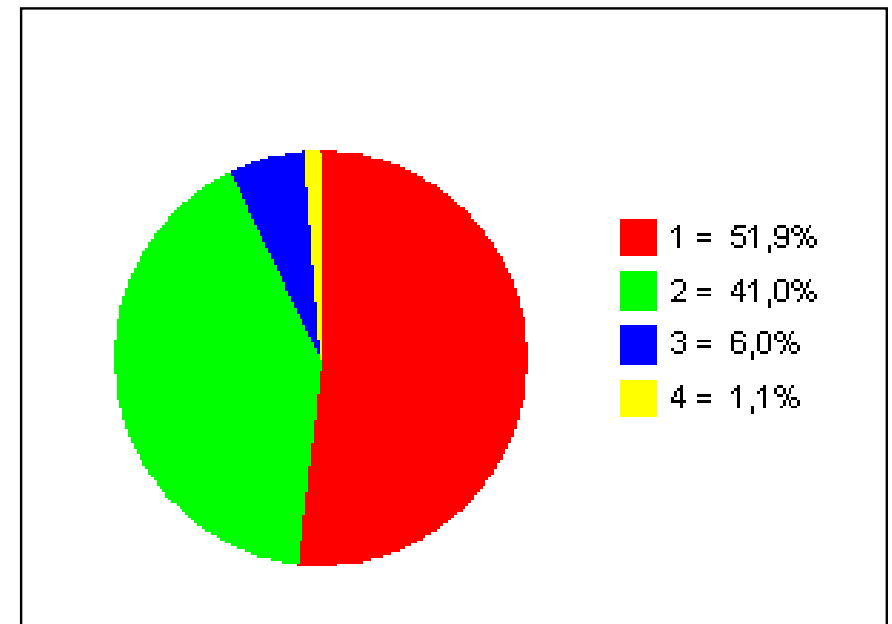


Foreldrakönnun Grunnskóla Seltjarnarness

18. Skólinn nýtur virðingar í samfélaginu

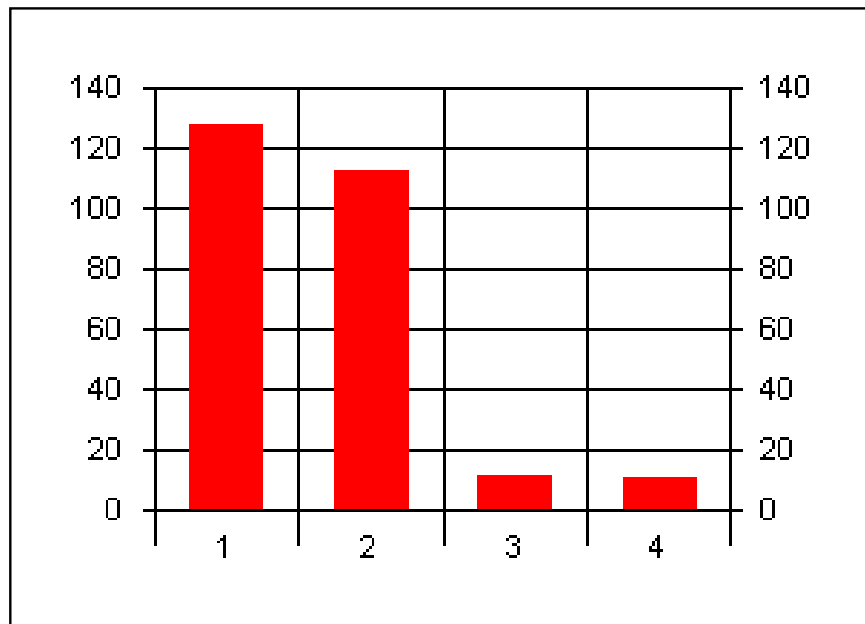


1 = sammála
2 = frekar sammála
3 = frekar ósammála
4 = ekki sammála

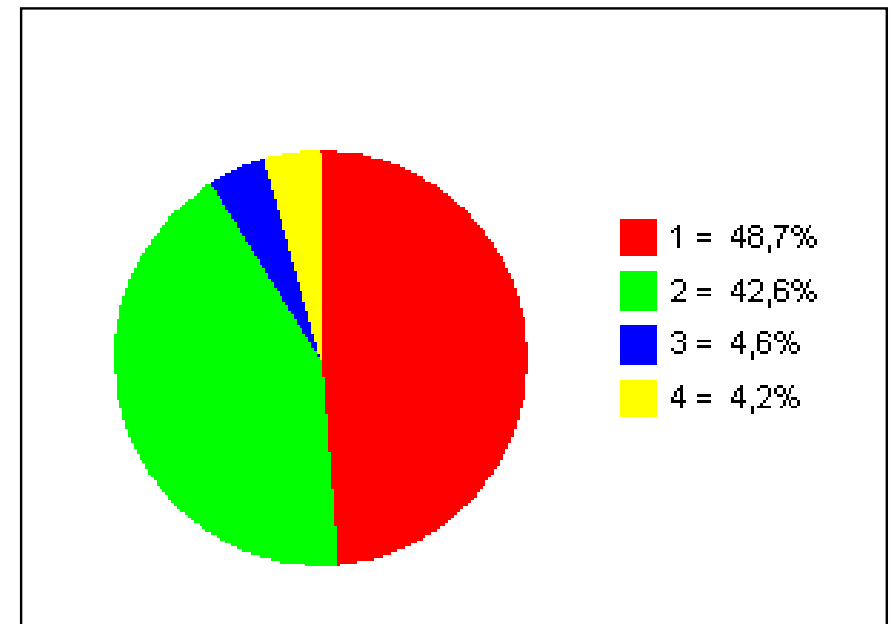


Foreldrakönnun Grunnskóla Seltjarnarness

19. Skólayfirvöld leggja mikinn metnað í að byggja upp góðan skóla

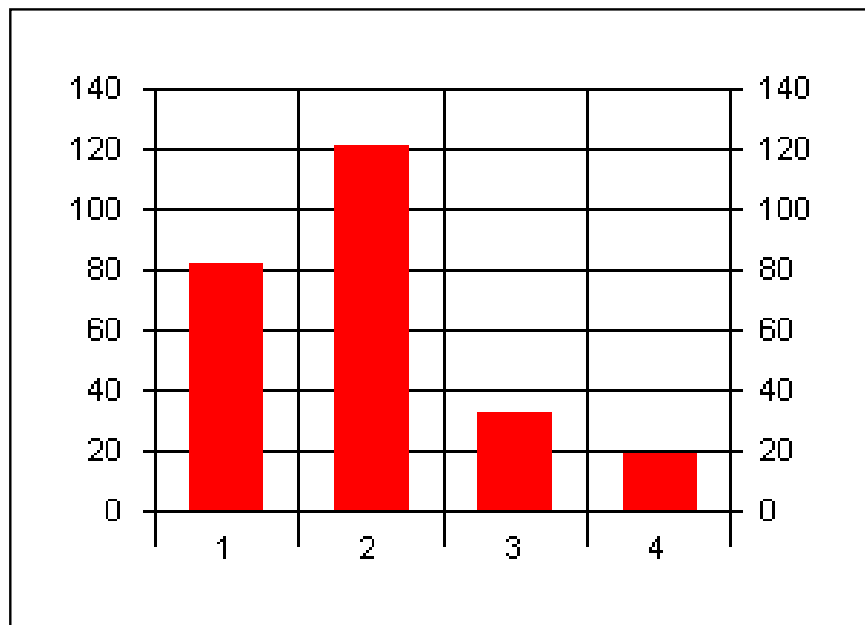


1 = sammála
2 = frekar sammála
3 = frekar ósammála
4 = ekki sammála

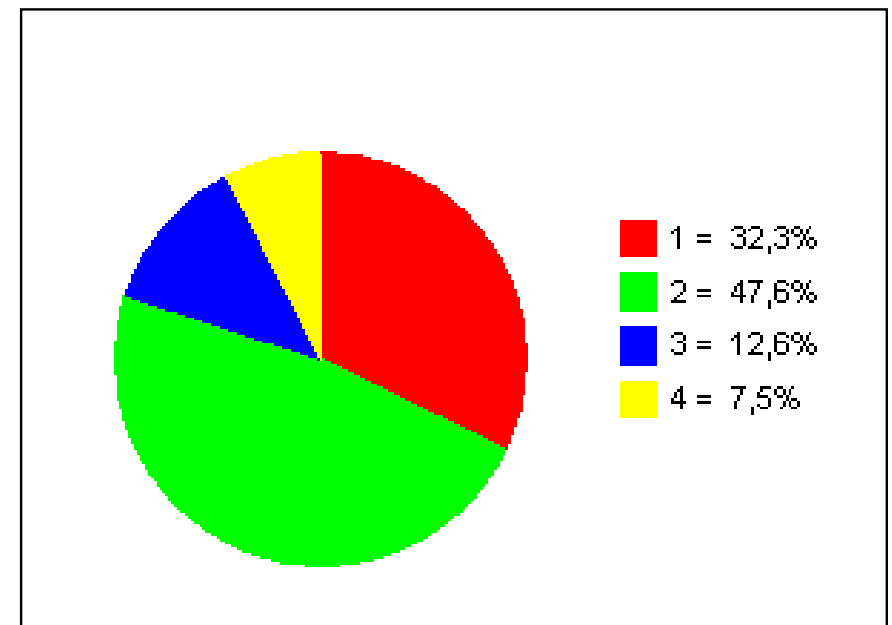


Foreldrakönnun Grunnskóla Seltjarnarness

20. Skólanefndin/fræðslunefndin sýnir áhuga og frumkvæði í málefnum skólans.

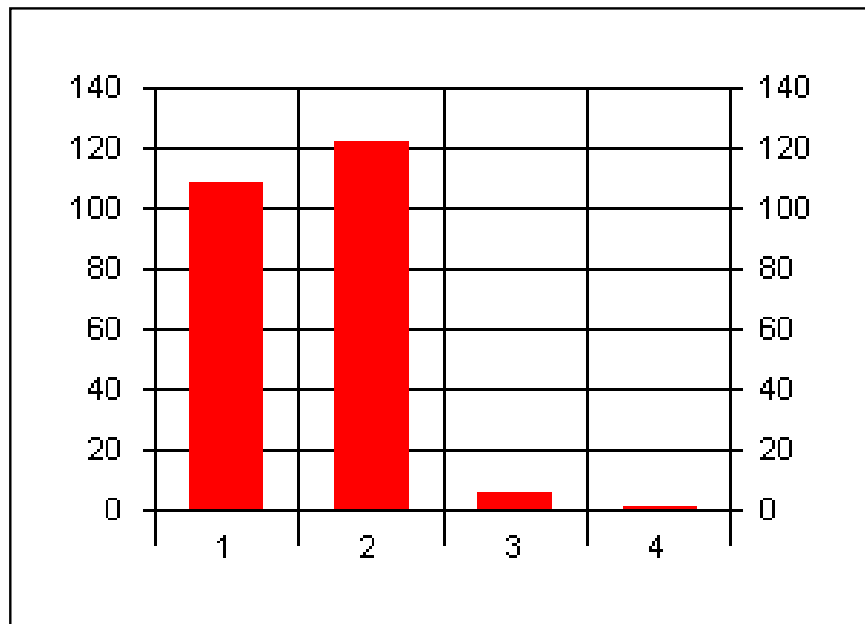


1 = sammála
2 = frekar sammála
3 = frekar ósammála
4 = ekki sammála

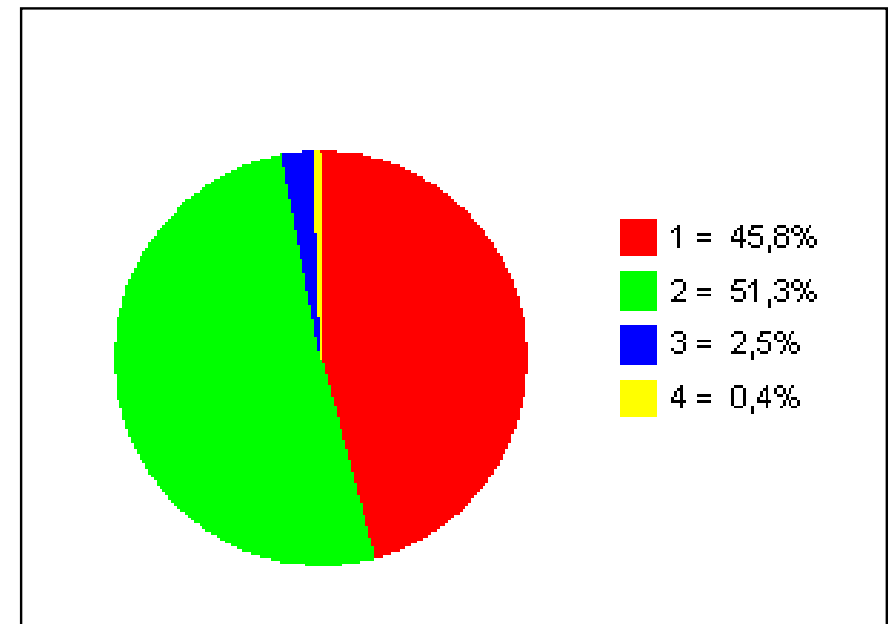


Foreldrakönnun Grunnskóla Seltjarnarnessó

21. Þjónusta við fatlaða er góð í okkar skóla

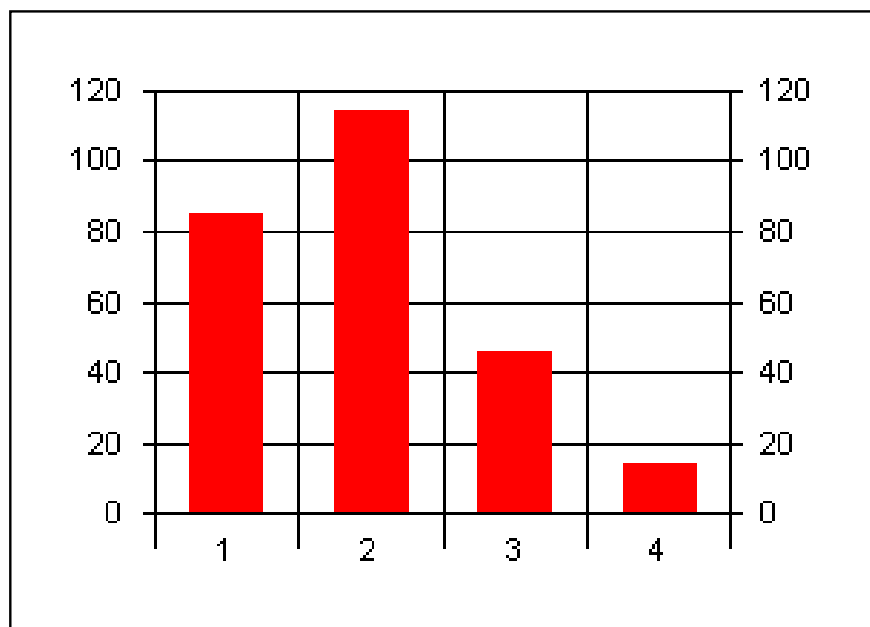


1 = sammála
2 = frekar sammála
3 = frekar ósammála
4 = ekki sammála

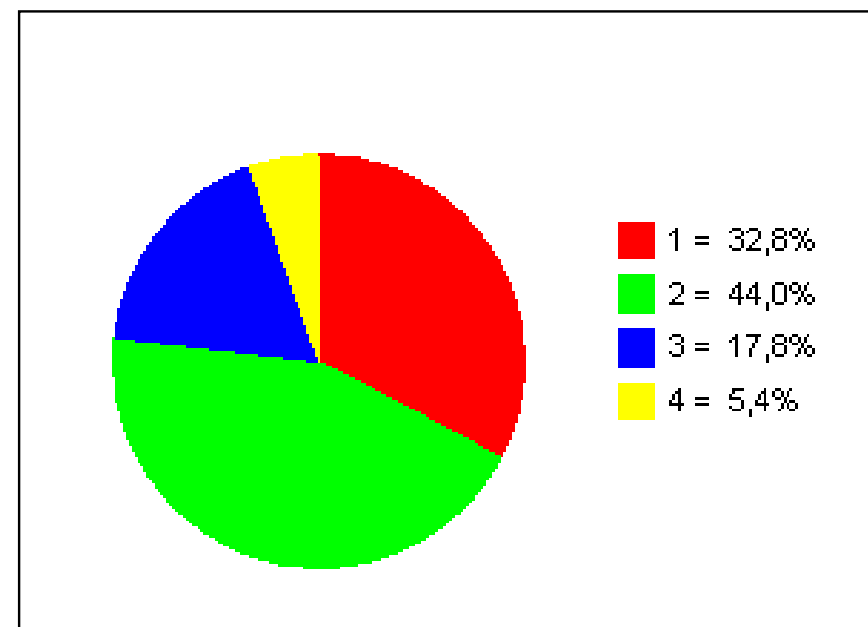


Foreldrakönnun Grunnskóla Seltjarnarness

22. Duglegir og afkastamiklir nemendur fá námsefni og hvatningu í samræmi við það

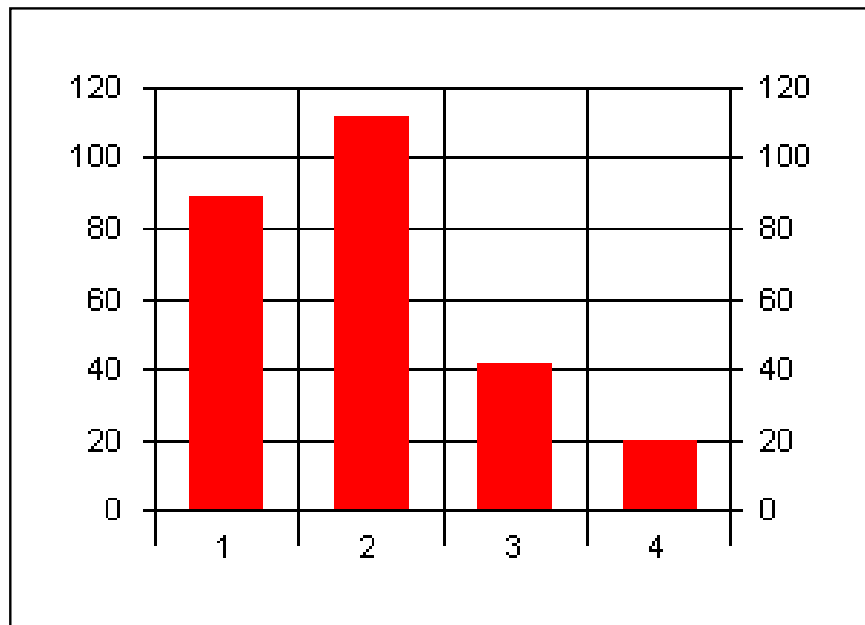


1 = sammála
2 = frekar sammála
3 = frekar ósammála
4 = ekki sammála

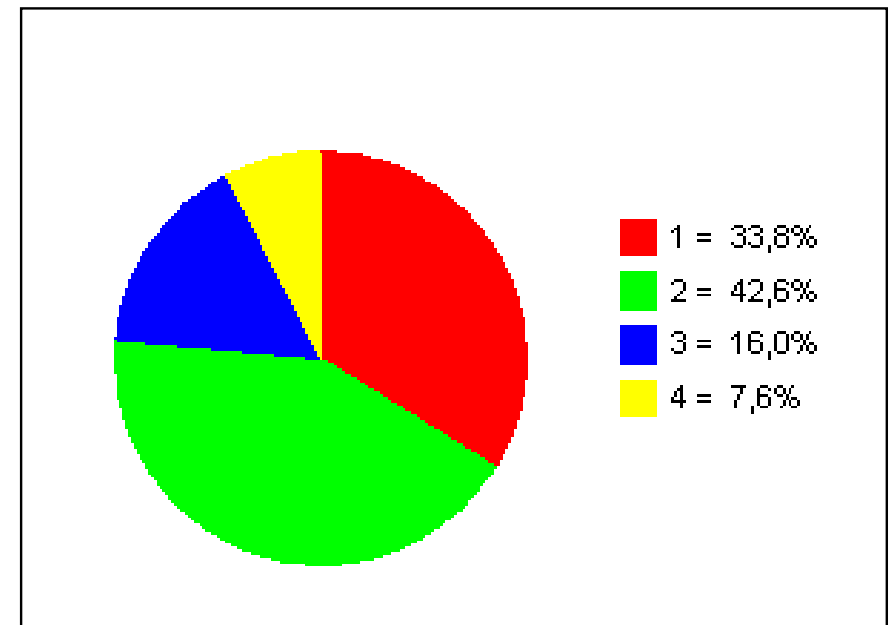


Foreldrakönnun Grunnskóla Seltjarnarness

23. Agvandamál valda ekki truflun á námsfriði og öryggi míns barns

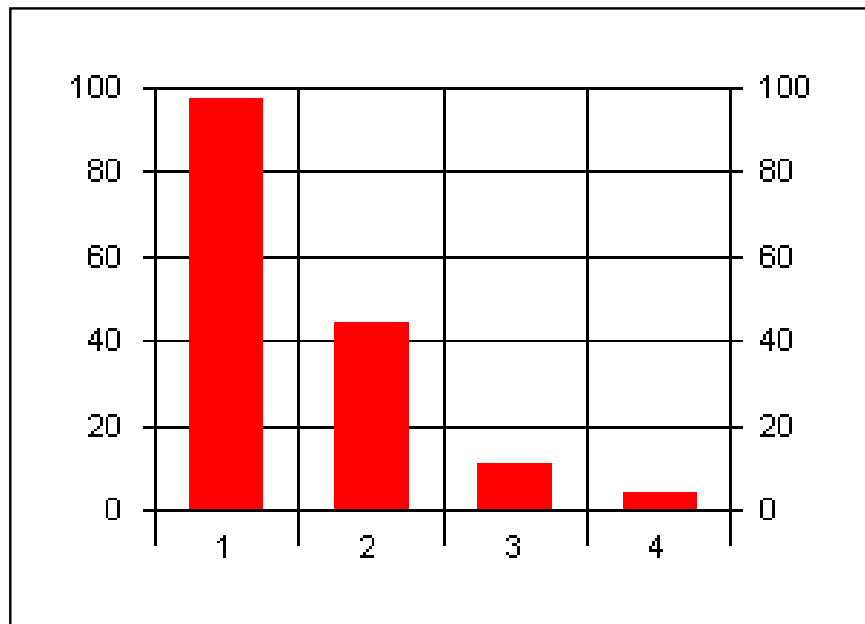


1 = sammála
2 = frekar sammála
3 = frekar ósammála
4 = ekki sammála

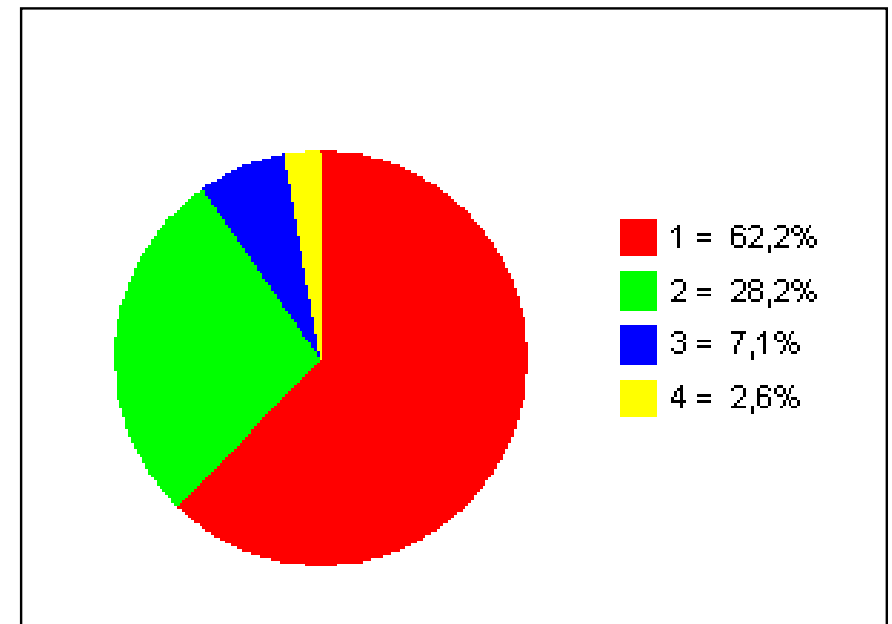


Foreldrakönnun Grunnskóla Seltjarnarness

24. Hvað finnst þér um ferðirnar (mismunandi námshraða) í 9. og 10. bekk?

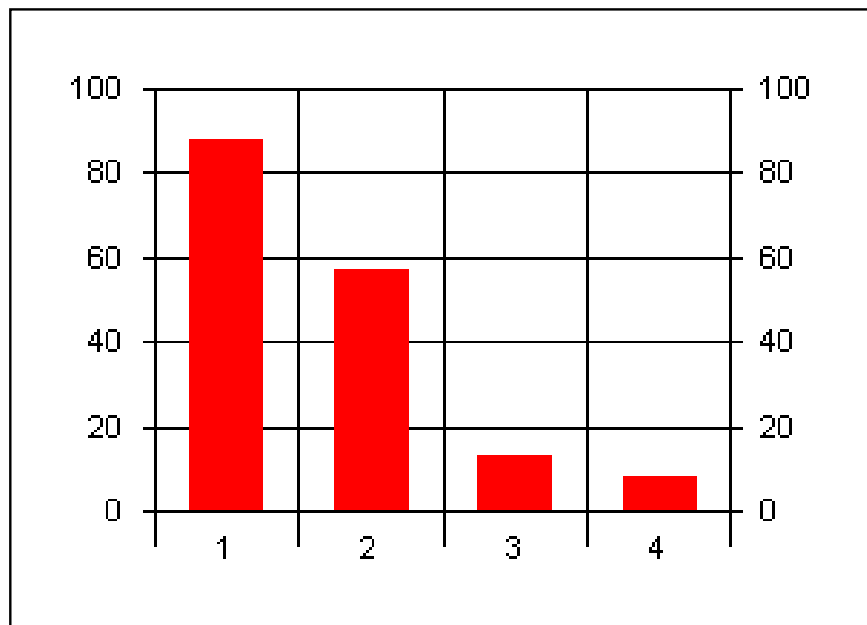


1 = Mjög gott fyrirkomulag
2 = Gott fyrirkomulag
3 = Sæmilegt fyrirkomulag
4 = Slæmt fyrirkomulag

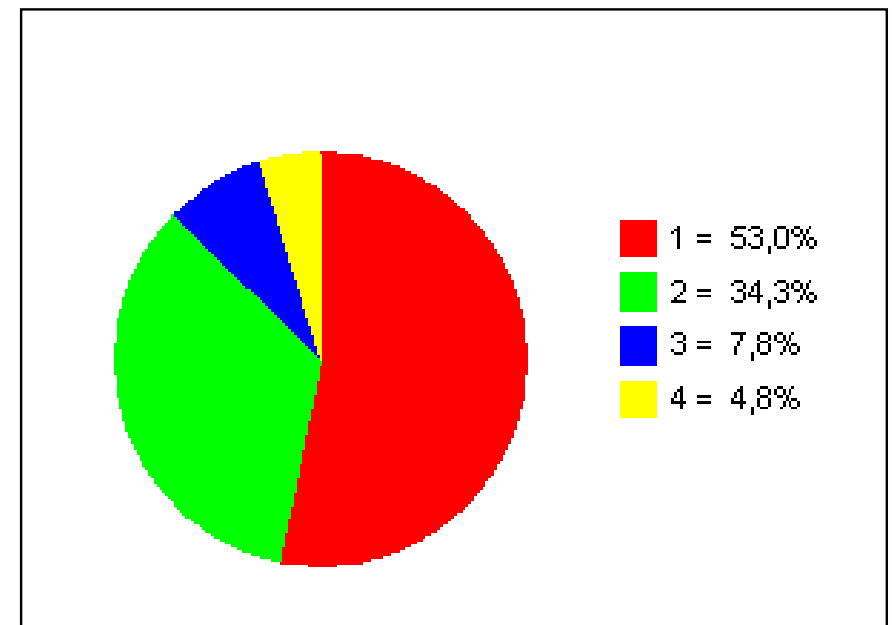


Foreldrakönnun Grunnskóla Seltjarnarness

25. Hvernig líst þér á að taka upp ferðaskipulag (mismunandi námshraða) í íslensku og stærðfræði í 7. og 8. bekk?

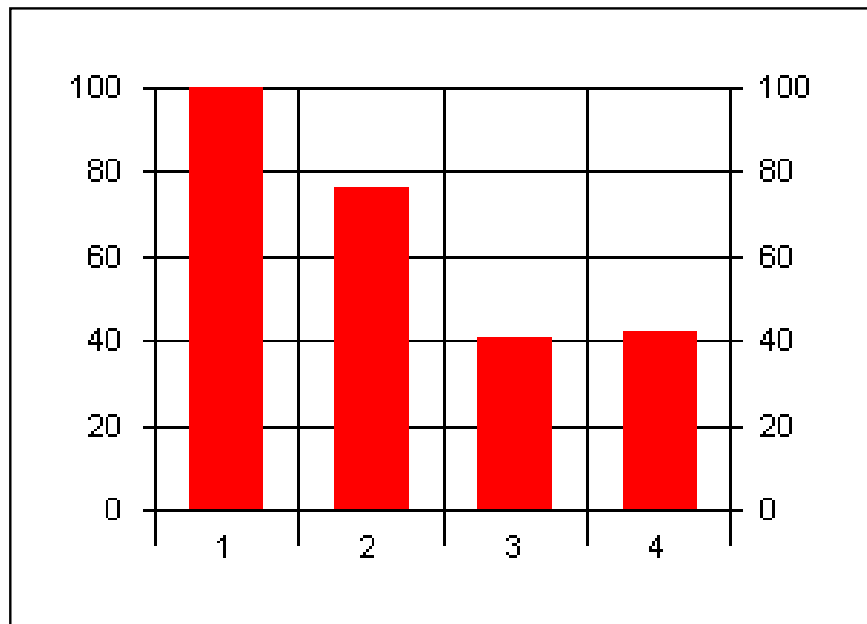


1 = Mjög vel
2 = Vel
3 = Sæmilega
4 = Illa

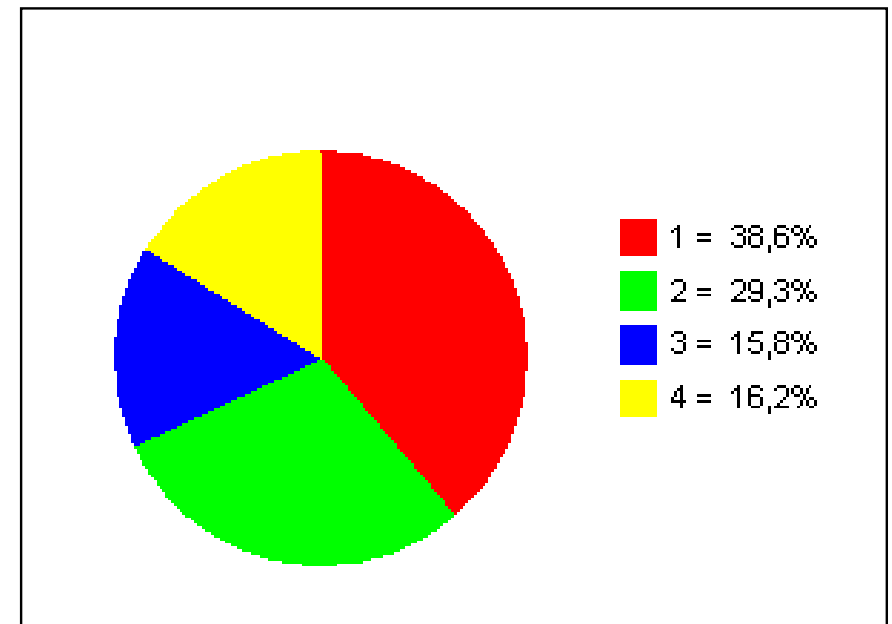


Foreldrakönnun Grunnskóla Seltjarnarness

26. Ertu hlynnt/ur eða andvíg/ur vetrarfríi í grunnskólum?

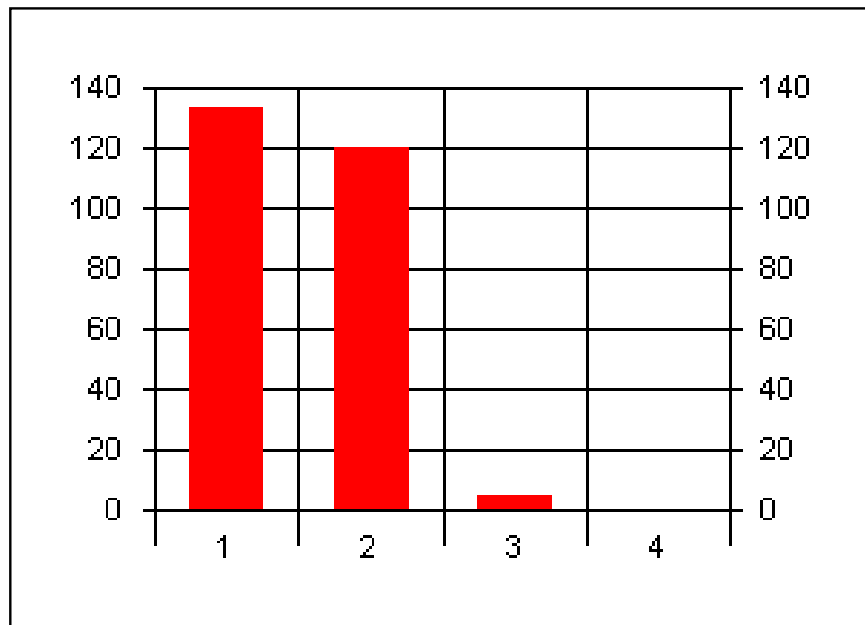


1 = Mjög hlynntur
2 = Frekar hlynntur
3 = Frekar andvígur
4 = Mjög andvígur

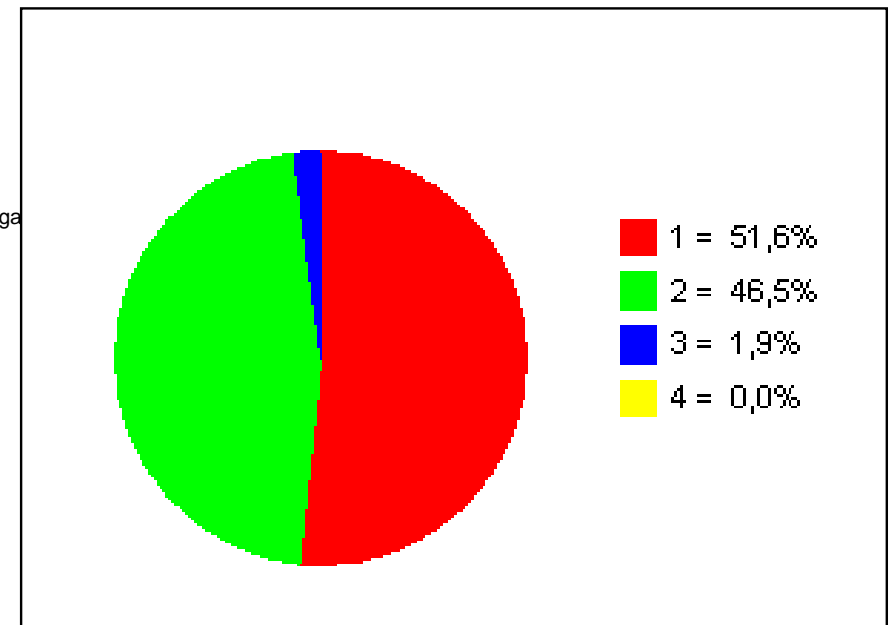


Foreldrakönnun Grunnskóla Seltjarnarness

27. Hvort viltu fimm daga vetrarfrí eða lengja sumarfríð um fimm daga?

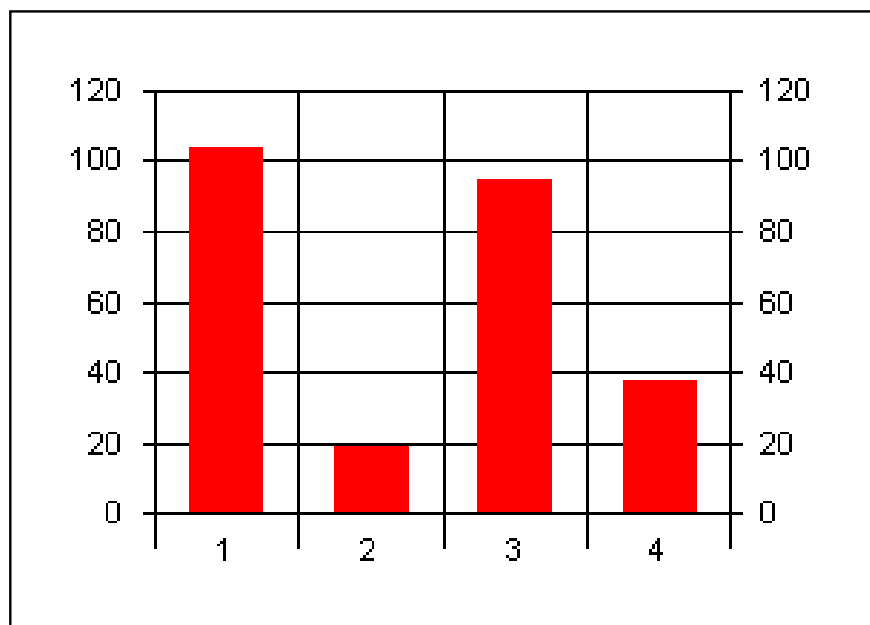


1 = Fimm daga vetrarfrí
2 = Lengja sumarfríð um fimm daga
3 = 0
4 = 0

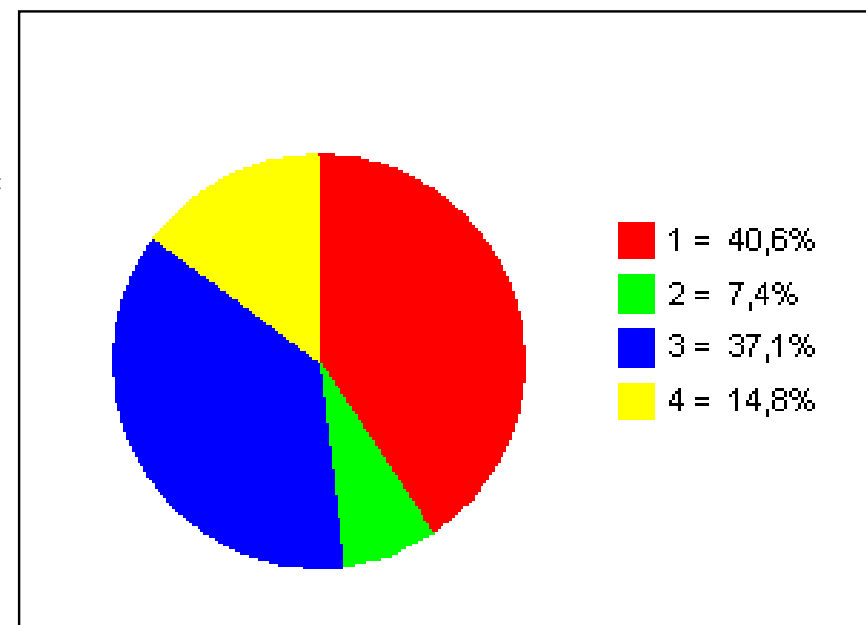


Foreldrakönnun Grunnskóla Seltjarnarness

28. Hvort hentar þér betur að vetrarfríð séu þrjú dagar fyrir áramót og tveir dagar eftir áramót eða að vetrarfríð sé fimm dagar fyrir eða eftir áramót, ef vetrarfrí verða ákveðin?

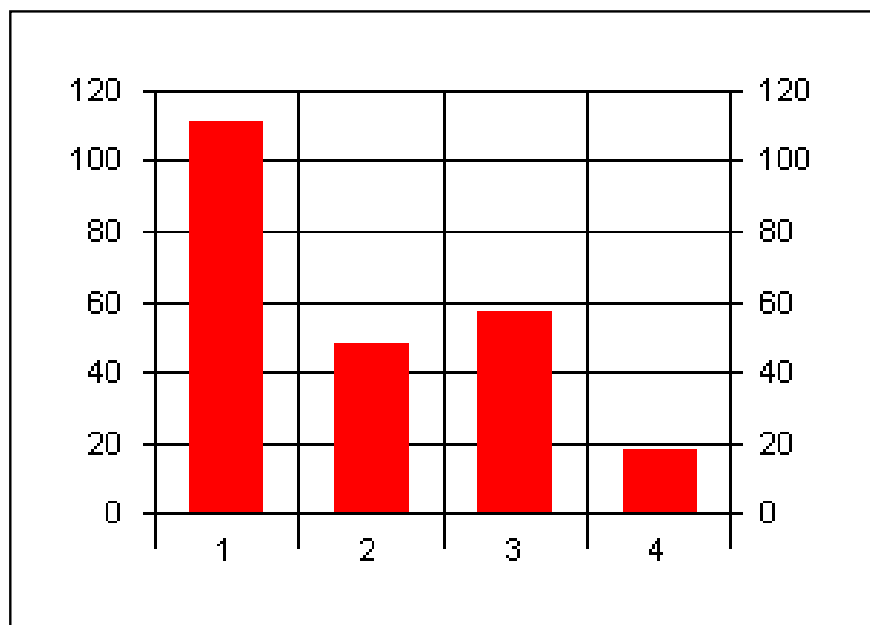


1 = 3 fyrir áramót og 2 eftir áramót
2 = Fimm dagar fyrir áramót
3 = Fimm dagar eftir áramót
4 = 0

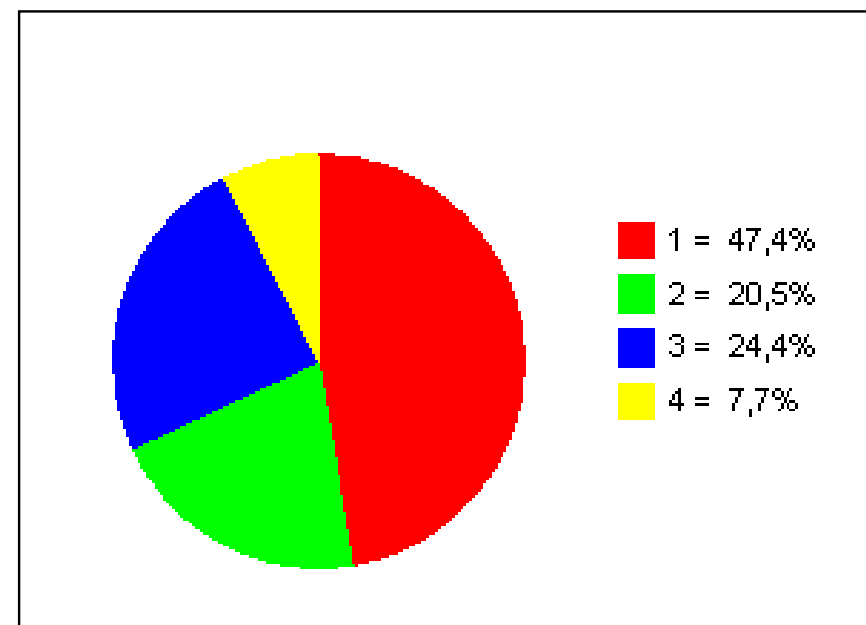


Foreldrakönnun Grunnskóla Seltjarnarness

29. BREYTINGAR sl. 2-3 ár - Starfsandi í skólanum

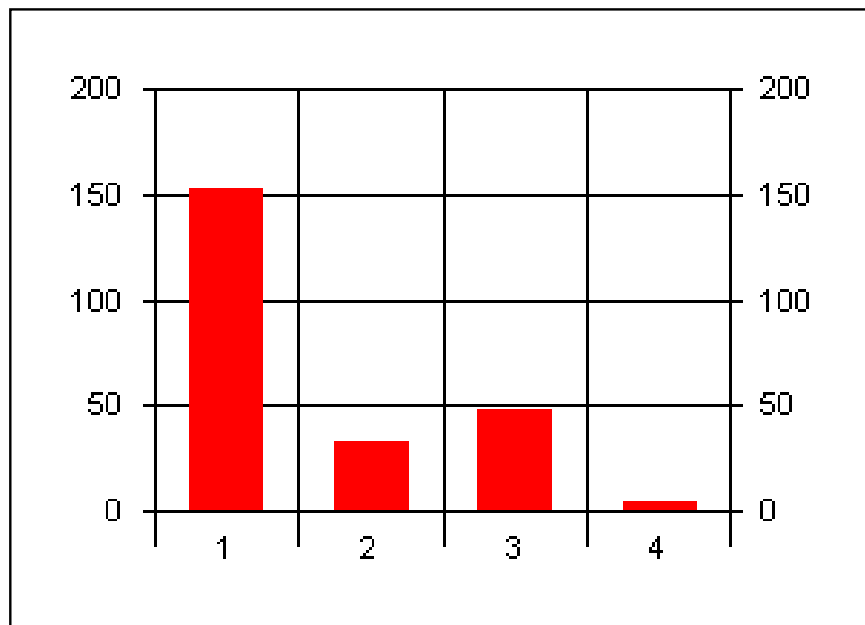


1 = er áfram góður
2 = hefur batnað
3 = er óbreyttur eða lakari
4 = virðist hafa versnað

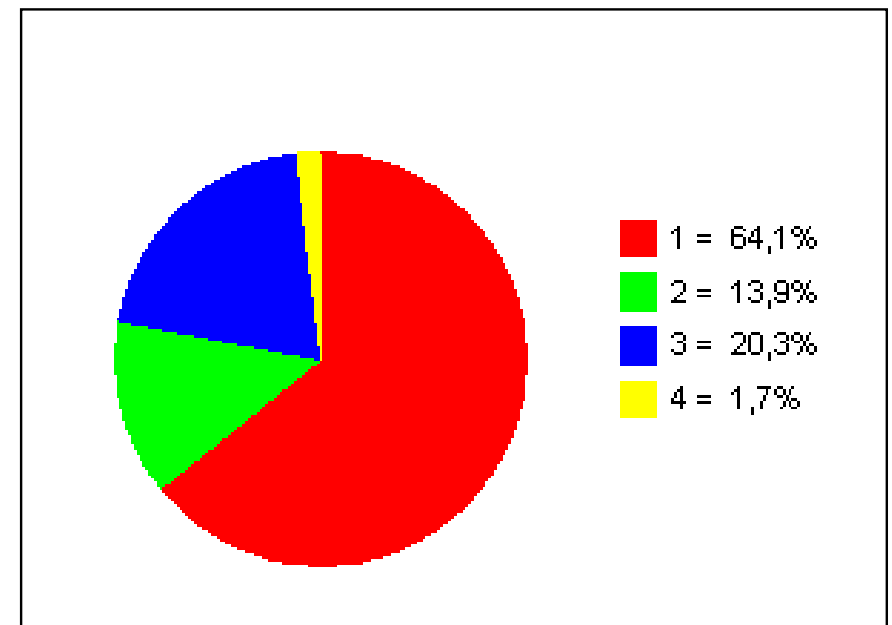


Foreldrakönnun Grunnskóla Seltjarnarness

30. BREYTINGAR sl. 2-3 ár - Frammistaða kennara

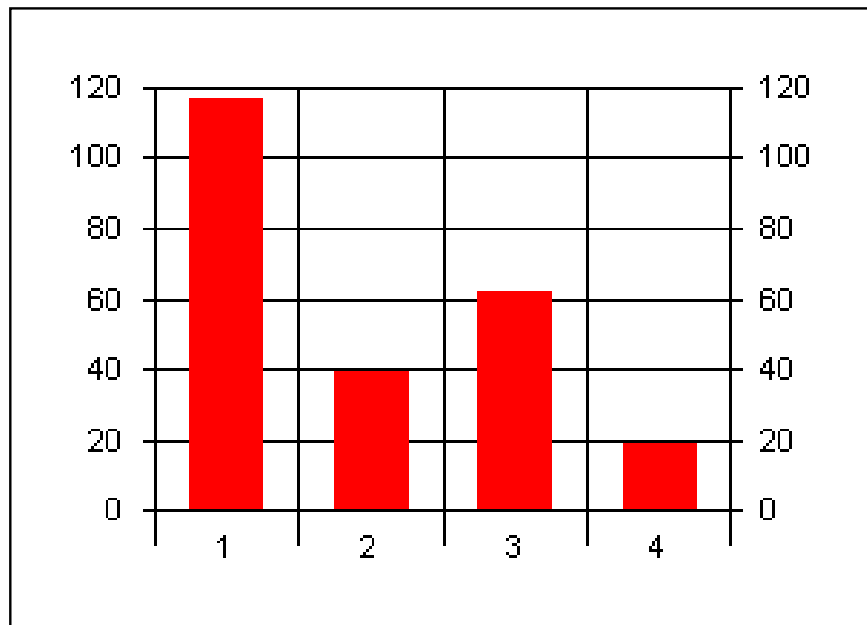


1 = er áfram góð
2 = hefur batnað
3 = er óbreytt eða lakari
4 = virðist hafa versnað

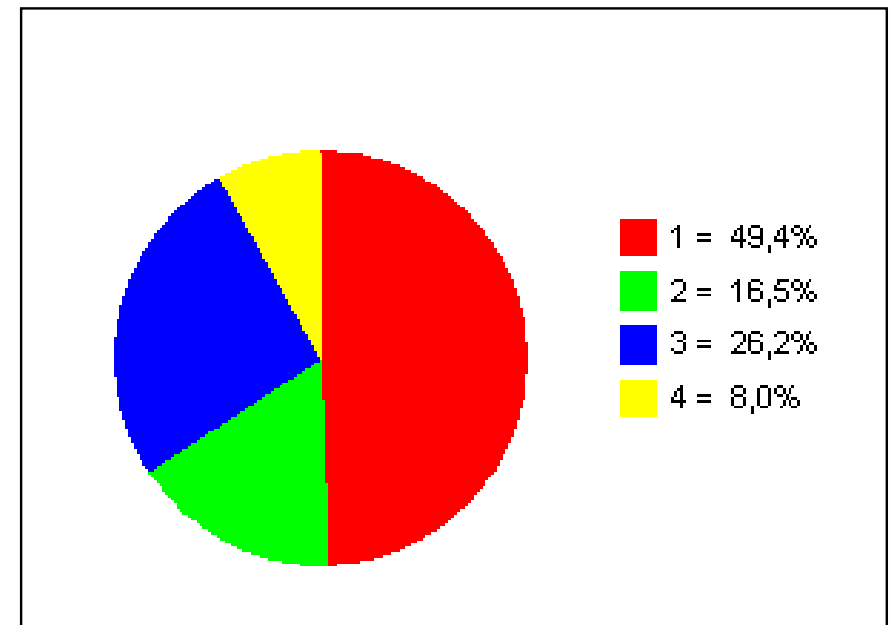


Foreldrakönnun Grunnskóla Seltjarnarness

31. BREYTINGAR sl. 2-3 ár - Stjórnun skólans

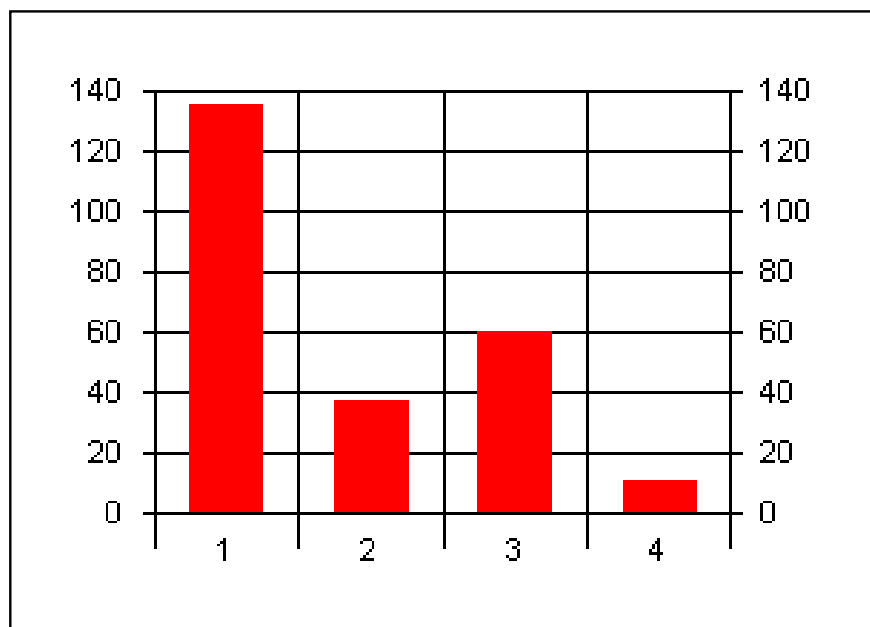


1 = er áfram góð
2 = hefur batnað
3 = er óbreytt eða lakari
4 = virðist hafa versnað

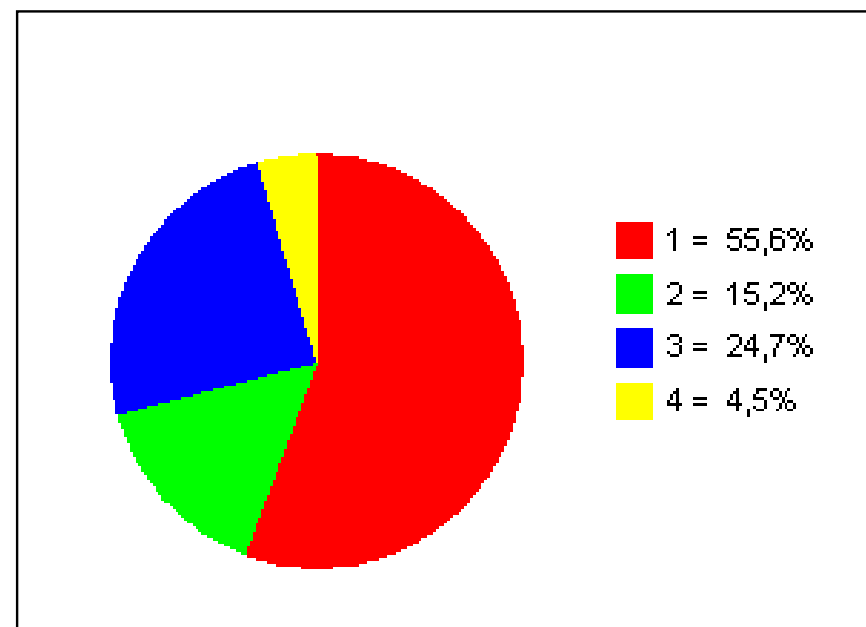


Foreldrakönnun Grunnskóla Seltjarnarness

32. BREYTINGAR sl. 2-3 ár -Viðhorf foreldra til skólans

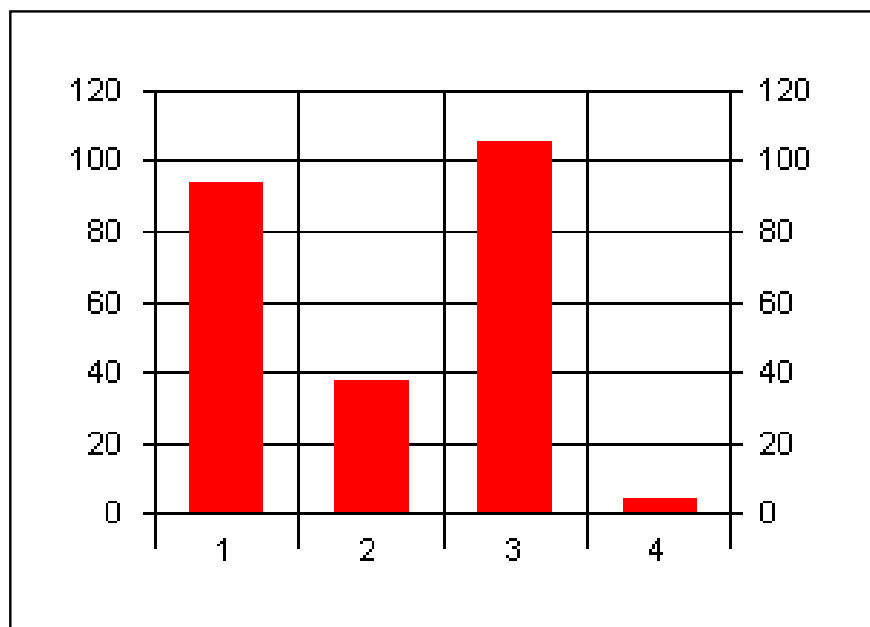


1 = er áfram gott
2 = hefur batnað
3 = er óbreytt eða lakara
4 = hefur versnað umtalsvert

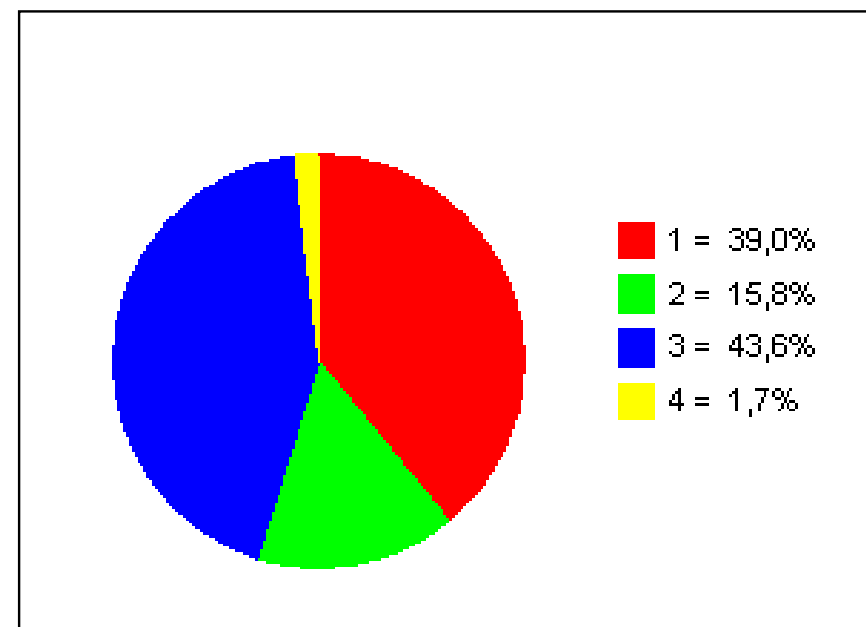


Foreldrakönnun Grunnskóla Seltjarnarness

33. BREYTINGAR sl. 2-3 ár - Foreldrasamstarf

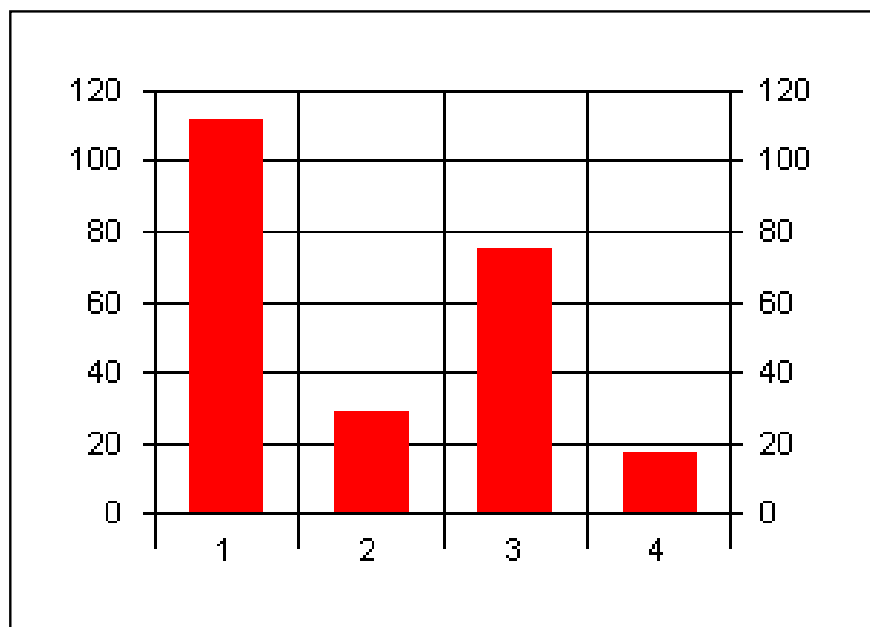


1 = er áfram öflugt
2 = hefur eflst
3 = er óbreytt eða lakara
4 = hefur versnað umtalsvert

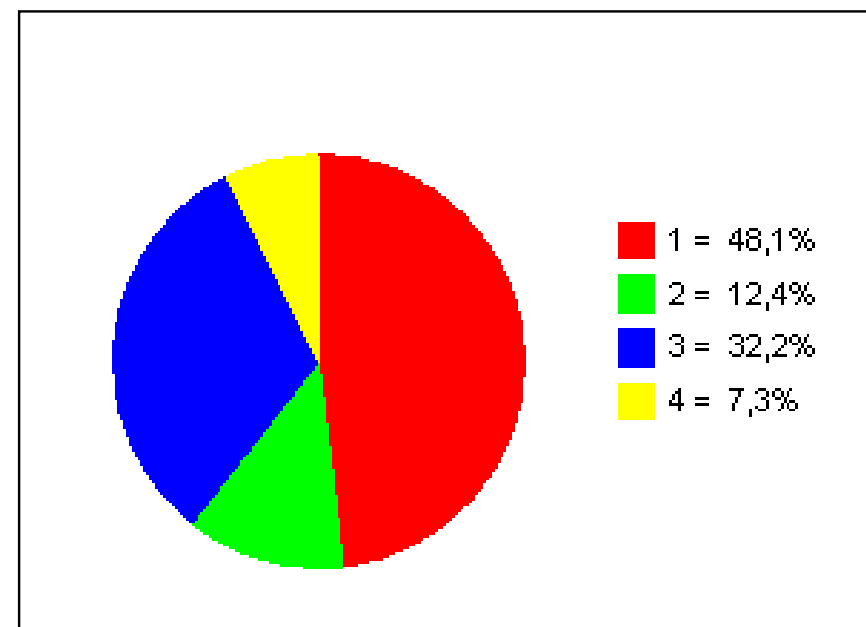


Foreldrakönnun Grunnskóla Seltjarnarness

34. BREYTINGAR sl. 2-3 ár - Samstarf við skólayfirvöld

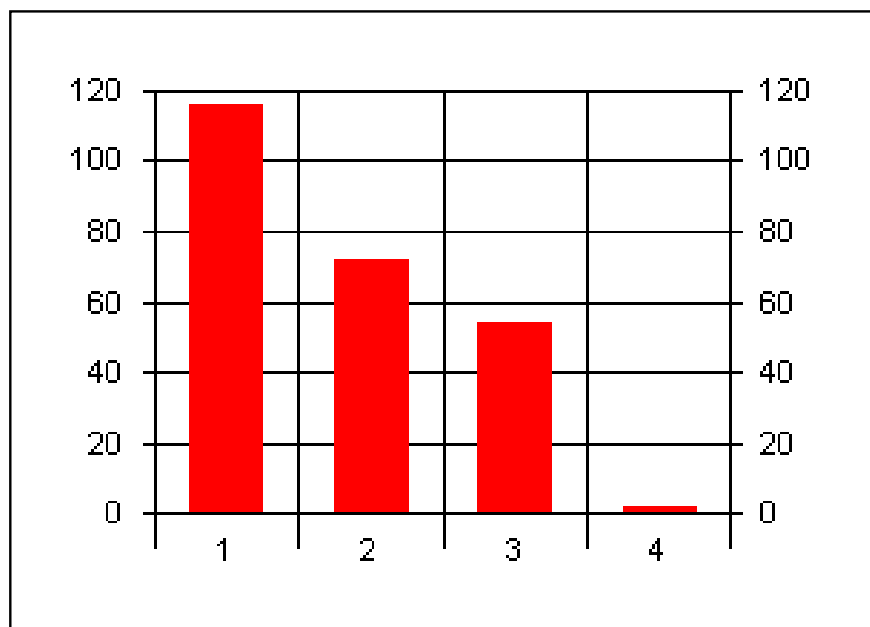


1 = er áfram traust
2 = hefur styrkst
3 = er óbreytt eða lakara
4 = virðist hafa versnað

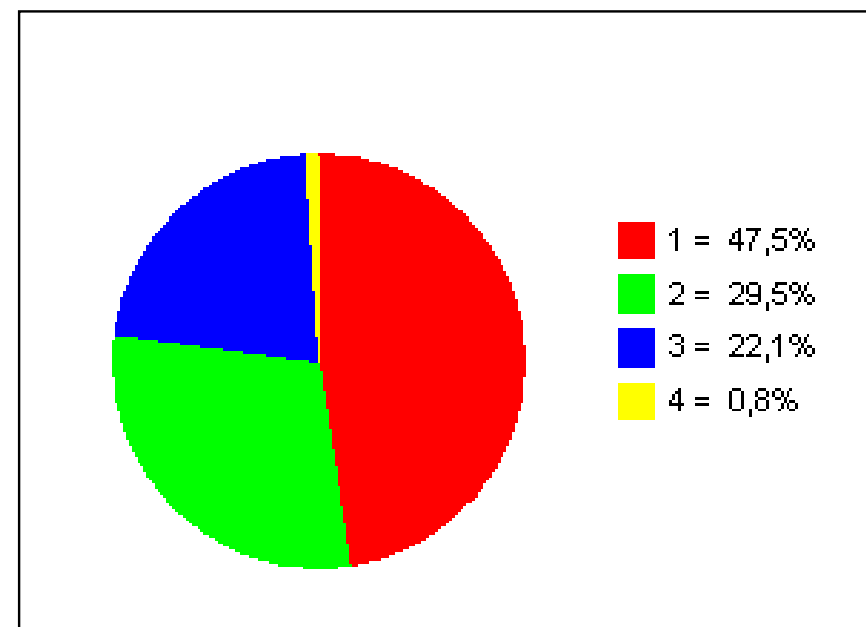


Foreldrakönnun Grunnskóla Seltjarnarness

35. BREYTINGAR sl. 2-3 ár - Þjónusta við nemendur

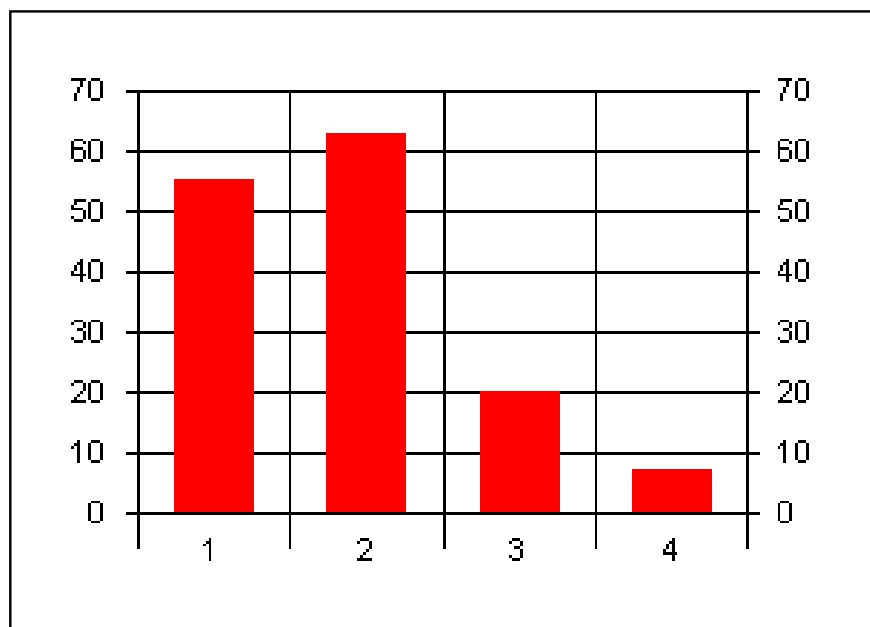


1 = er áfram góð
2 = hefur batnað
3 = er óbreytt eða lakari
4 = hefur versnað umtalsvert

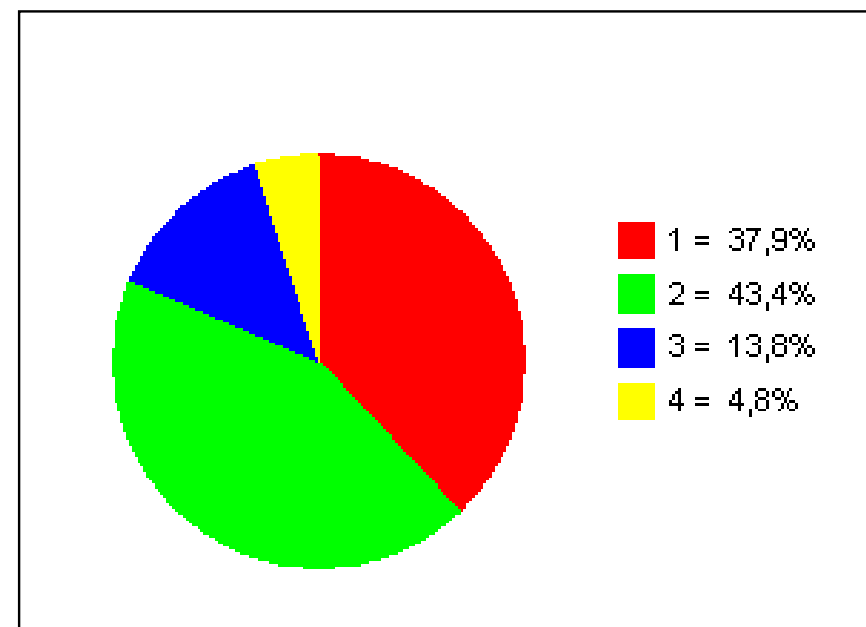


Foreldrakönnun Grunnskóla Seltjarnarness

36. Ég er ánægð/ur með matseðilinn sem birtist á heimasíðu skólans

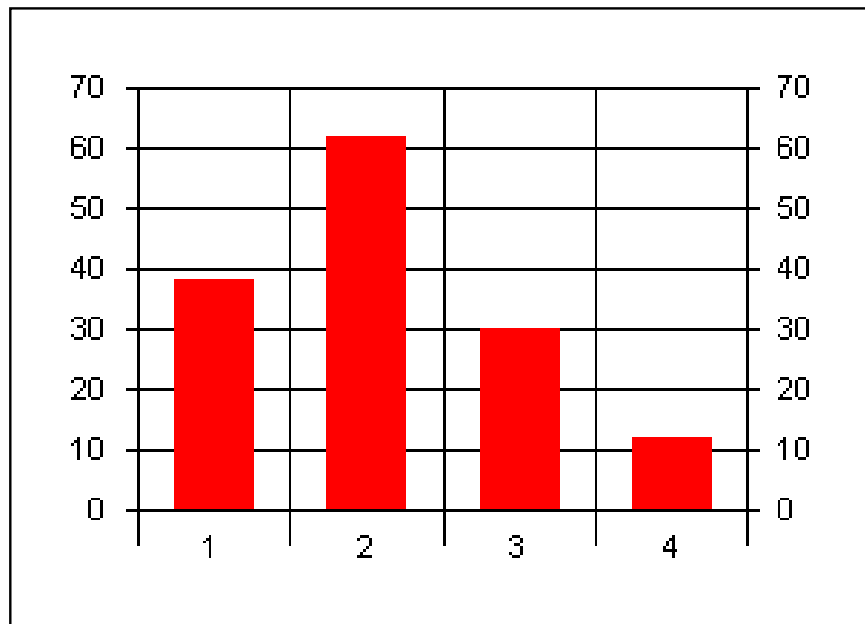


1 = sammála
2 = frekar sammála
3 = frekar ósammála
4 = ekki sammála



Foreldrakönnun Grunnskóla Seltjarnarness

37. Barnið mitt er ánægt með matinn sem það fær að borða í mótuneytinu.



1 = sammála
2 = frekar sammála
3 = frekar ósammála
4 = frekar ósammála

